

Australian Postcard Society Inc.

Meetings: 7.45p.m. — 4th Thursday of the month
(11 meetings only per year)

Where SAPHIL House, 22 Gray Court, Adelaide

Who Anybody that is interested in postcards

Costs Gold coin donation to cover supper costs.

Syllabus for 2011

Date	Theme for all members on the following topics	Invited Display (Up to 5 frames)
27th January	Australia	Joyce Aspinall (Heartbeat Country)
24th February	New Zealand	David John (Zeppelin)
24th March	Pacific Islands	Peter Rooke (Hampton Court)
28th April	Asia	Betty Cornish Memorial Trophy (6 pages, theme of Nursery/Childhood)
26th May	North America	SUPER AUCTION
23rd June	South America	Robert Gooding (Wiltshire Producer)
28th July	Africa	ANNUAL GENERAL MEETING and Empire Trophy 8 page competition
25th August	Antarctica	Janet Ingleton (German Shipping)
22nd September	United Kingdom	Committee Members Display
27th October	Europe	Pauline & David Edwards Surprise Night
24th November	Canada	Fun Competition and Christmas Breakup
December	No meeting	

Australian Postcard Society Inc.



BULLETIN

November 2010

Quarterly Issue No.07

WEBSITE ADDRESS: australian-postcard-society.com

*Merry Christmas and a Happy, Healthy
and Prosperous New Year to All*



Elected Committee:

President	John Bell
Vice-President	John Bodnar
Treasurer	David Figg
Secretary	Linda Welden
Librarian	Rob Halliday
Publicity	Bob Gooding
Auction Superintendent	George Turner
Magazine Editors	David & Pauline Edwards
SAPC Delegate, Raffle & Postal Auction Organiser	Claire Thomas

PATRON	Phil Sunman
Website Managers	Jeff & Yvette Trinidad
Auditor	Andy Kovaleff

Any questions or matters of interest

contact The Secretary,
Linda Welden,
PO Box 281,
Edwardstown,
South Australia, 5039.
email: linda1956@three.com.au
Phone: 0421 367 665

Membership Fees—1st July-30th June

SINGLE	\$18.00
JUNIOR up to 16	\$ 6.00
FAMILY	\$25.00

CONTENTS

Front Cover: Christmas/New Year	
Back Cover: 2011 Syllabus	
Club Information	P.2
Coming Events	P.2
Next Postal Auction	P.2
Seasonal Cards	P.3
The Battle of Jutland (Cont'd)	
by John Bell	P.4,5
A Look Back in Postcard Time	
by John Bodnar	P.6
Bottle Nosed Dolphins	P.7
by Pauline E	to 10
Stampex Results for Bulletin	
Entry	P.12
Australian Cities & Towns,	P.13
Adelaide, by Pauline E	to 17
Market Trends	
from Phil Sunman	P.17
Noticed on eBay	P.17
Humour	P.18
Word Game	P.18
Advertisements	
Phylicia Antiques	P.14
Members	P.19
Abra Card Abra/Roycroft	P.19

COMING EVENTS:

Postcard Design Competition for National Postcard Week—entries due at February meeting.

Betty Cornish Memorial Competition in April, 6 pages of wholesome childhood themes on Postcards, to be chosen by popular vote. Open to all members.

There is also **Mandurah 2010** which is a National One Frame Competition for stamps, coins, banknotes and postcards being held 19-21st November 2010.

NEXT POSTAL AUCTION

Our next Postal Auction is due out with the February 2011 Bulletin. If you have any lots that you would like to include please forward to the Secretary no later than the January Meeting, earlier if possible. The cover sheet for auction lots can be collected from me at meetings. Please use one per postcard, fill out, and forward to the Secretary.

Thanks,
Claire Thomas,
Postal Auction Organiser

NEW MEMBERS

Welcome to Jim Mulcahy of Mount Gambier and Allen and Alma Downes from Ingle Farm.

MEMBERS ADVERTISEMENTS:**WANTED TO BUY:**

DC3 aircraft postcards, Swiss postcards prior to 1960, hospitals and cards dated 1943. Anybody with any of these cards to spare please contact Ray Thompson with details on Phone: (08) 8258.9022.

Postcards of C.A. Pitt & Co., C.A. Pitt Ltd., Souvenirs Australia Pty. Ltd., 1951-1995. Phone Bronte Watts (08) 8431.0549.

Australian Comic Postcards. Collector and researcher looking for singles, groups, duplicates, hoards, large/small collections. Anything considered. Contact Gary Davies, PO Box 107, Magnetic Island, Queensland, 4819. email: ccbnq@optusnet.com.au

Metamorphic postcards in good condition. Contact David Edwards, Phone: (08) 8250 0484 or email: mmstamps@chariot.net.au

Postcards of Botanic Hotel and Newmarket Hotel, Adelaide. Must be in good condition. Contact Pauline Edwards, Phone: (08) 8250 0484

Any postcards relating to Australian National Rifle Association shooting contests for selection and competitions held at Bisley Camp in England. Contact Lorenzo, Ph:(08) 83361340, or email: lorenzog@esc.net.au

Silk cards in good condition bearing military badges; flags of America, New Zealand, Wales, India, and Italy. Contact Lorenzo, email: lorenzog@esc.net.au or Phone: Ph: (08) 83361340.

Picture Postcards of the Post Offices in Vienna; Cracow; Budapest; Lemberg and Kiev. Please contact John Bodnar advising of your asking price. email: mibetco@senet.com.au or PO Box 395, Edwardstown, SA, 5039, Australia. Thank You.

Wanted to Buy: Postcards of Kalamunda (West Australia), Goa (India), Lord Howe Island & Magnetic Bay (Queensland) and Norfolk Islands
Email: pk@bankofideas.com.au or Call Peter Kenyon on: 62931848

BUYING - SELLING

**Old Books, Postcards, Trade Cards,
Cigarette Cards, Ephemera,
Autographs, Sheet Music, Anything Printed.**



ABRA CARD ABRA ROYCROFT

680 High Street, East Kew, 3102, Victoria

Phone/Fax (03) 9859 4215

HUMOUR DOESN'T CHANGE MUCH OVER THE YEARS



A NEW YEAR'S CARD FROM A CENTURY AGO



HOLIDAY FUN - WORD GAME - FIND THE ARTISTS' SURNAMES

N	M	T	O	Y	M	B	C	A	N	T	L	E	N	F	I	S	H	E	R
Z	C	T	U	R	N	E	R	L	N	I	G	R	U	P	S	W	J	V	X
R	G	E	V	W	S	W	K	O	T	S	E	P	M	E	T	P	Z	O	K
I	I	R	P	A	T	J	J	W	N	N	O	T	P	U	R	J	U	M	
C	L	B	O	I	L	E	A	U	Y	N	G	H	A	R	D	Y	S	A	Q
H	L	X	H	N	O	A	C	A	R	R	E	N	S	I	D	F	U	L	M
A	I	J	B	R	Y	Q	P	S	T	A	H	L	C	L	Y	Z	I	T	B
R	D	R	A	N	N	A	T	S	F	M	U	C	H	A	A	G	T	H	E
D	V	N	R	K	W	Z	E	B	A	T	E	S	M	N	J	V	H	Y	R
S	E	F	H	Y	P	S	J	T	M	D	E	L	U	E	W	U	I	A	T
O	I	U	A	F	S	O	T	Q	X	K	D	E	C	L	O	K	E	S	I
N	C	L	M	C	R	W	D	A	V	E	Y	L	K	S	X	E	L	D	G
J	I	L	G	A	E	E	B	U	X	T	O	N	E	H	E	J	E	N	L
T	V	W	M	L	O	R	W	H	E	E	L	E	R	T	E	W	T	I	I
H	O	O	L	D	U	B	P	E	Y	L	I	K	I	N	S	E	L	L	A
M	D	O	E	E	J	Y	V	K	I	R	C	H	N	E	R	F	G	R	G
A	U	D	Z	C	N	X	H	L	L	A	W	F	K	L	E	I	N	L	N
L	L	I	N	O	S	B	I	G	E	R	O	M	Q	B	U	L	L	K	U
L	X	Q	E	T	I	A	W	H	T	U	O	T	O	U	P	I	Y	Z	O
E	G	H	U	T	C	H	I	N	G	S	D	W	I	G	G	I	N	S	Y

- ARTISTS SURNAMES**
- | | | |
|------------|------------|----------|
| ATTWELL | GIBBS | SPURGIN |
| BARHAM | GIBSON | STAHL |
| BATES | GILL | STANNARD |
| BERTIGLIA | HARDY | STUDDY |
| BOILEAU | HUTCHINGS | TEMPEST |
| BRETT | KINSELLA | THIELE |
| BROWNE | KIRCHNER | TURNER |
| BULL | KLEIN | UPTON |
| BUXTON | LINDSAY | WAIN |
| CALDECOTT | LUDOVICI | WALL |
| CARR | MAUZAN | WHEELER |
| CANTLE | MAY | WHITE |
| CLAPSADDLE | MCGILL | WOOD |
| CLOKE | MUCHA | YOUNG |
| DAVEY | OUTHWAITE | |
| DWIGGINS | PAYNE | |
| ELLAM | RICHARDSON | |
| FISHER | SCHMUCKER | |
| FULLWOOD | SOWERBY | |



ADELAIDE, SOUTH AUSTRALIA.

1908 SHADE TEMPERATURE.

Jan. Deg.		Jan. Deg.	
1.	97.3	11.	77.9
2.	104.4	12.	93.6
3.	101.9	13.	102.2
4.	107.9	14.	107.3
5.	108.3	15.	111.4
6.	108.3	16.	110.4
7.	108.4	17.	110.4
8.	90.3	18.	110.5
9.	75.2	19.	110.9
10.	76.0		

"Lest We Forget."

Copyright.

Produced by Donald Taylor Collotype Company, Ltd. N. Adelaide, S.A.

SUMMER IS COMING - IS IT GOING TO BE HOTTER THAN THE 1908 TEMPERATURES

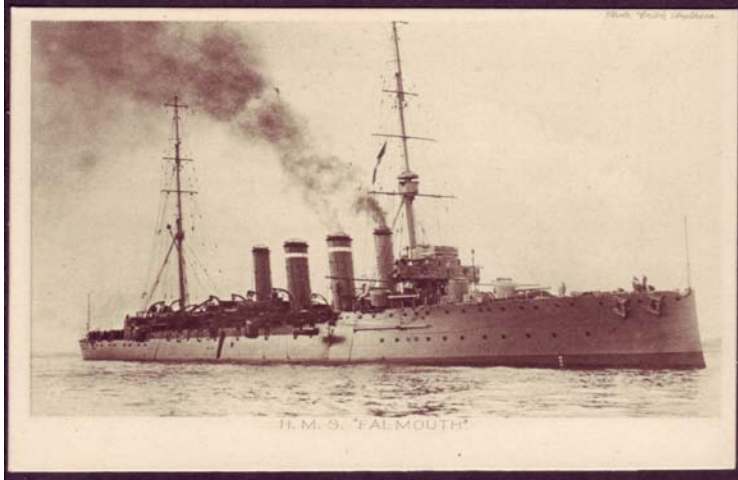
The Battle of Jutland - by John Bell (Continued from Bulletin 06)

The Fleets Collide

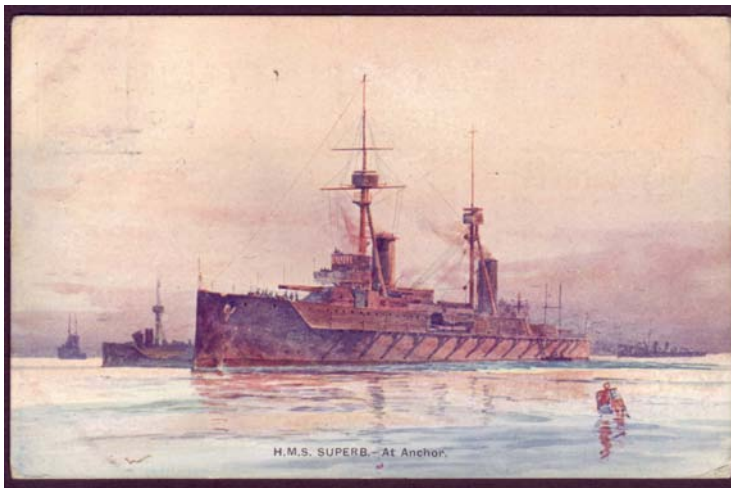
Jellicoe had decided a night action was too risky to attempt, mainly because of torpedo attacks and also the British were not trained for such a battle. At 9.01pm GMT the fleet was ordered South on a course Jellicoe hoped would keep him between the German fleet and the shelter of their mine-fields.

At 9.10pm GMT Scheer ordered the German fleet on to a course for the Horns Reef mine fields about 85 miles away.

Minor actions took place during the night mainly between Light-cruisers and Destroyers, the German Battleships also came under spasmodic attacks from British Destroyers. The British lost the Armoured-cruiser Black Prince with the entire crew of 857 when it blundered into the German fleet. Five Destroyers were lost and several others heavily damaged as were some of the Light-cruisers, casualties were high on all these ships. The Germans had their losses as well, the old Pre-dreadnought Battle-ship Pommern exploded after being hit by a torpedo with the



HMS Falmouth British Light-cruiser, 5,250 tons, eight 6 inch guns, completed 1912. Was Flagship 3rd Light-cruiser Squadron at the battle.



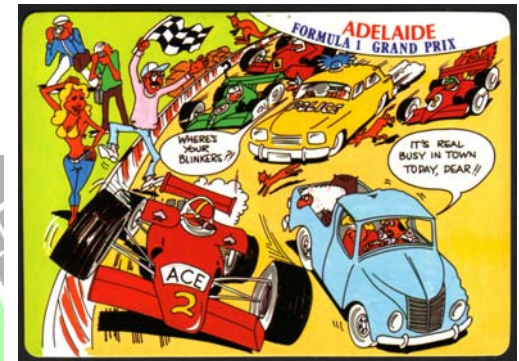
HMS Superb British Dreadnought Battleship, 18,800 tons, ten 12 inch guns, completed 1909. Was part of the 4th Battle Squadron at the battle.

AUSTRALIAN CITIES AND TOWNS - ADELAIDE

In 1887 the Government built the Jubilee Exhibition Building to celebrate the jubilee of Queen Victoria's reign. The show was moved to there in 1895. The live-stock was carried to this site by train which ran under King William Road on a line constructed in 1854. In 1911 the Government purchased vacant land at Wayville, but with the intervention of the First World War and with no funds to spare, the move to Wayville was not made until 1925 where the show continues to be held.



Adelaide was the home of the Formula 1 Grand Prix from 1985 to 1995 before it moved to Melbourne in 1996.



Produced by Murray Views, Gympie, Qld.

Most information and maps courtesy of Wikipedia.

MARKET TRENDS from Phil Sunman

Sales on the internet are a bit quiet at the moment although sales in the shop are going well. Australian card sales are slow although sales of good photographic topographicals of the UK particularly from southern areas such as Sussex are excellent.

NOTICED ON EBAY

- Collingwood v Fitzroy postcard c1905 by W R Hamilton sold for \$371 after 8 bids.
- Real Life Aussie Digger France 1917 sold for \$0.99 after 3 bids.
- 1916 Postcard L21 Zeppelin brought down at Cuffley WWI sold for \$22.50 after 4 bids.
- French WWI Embroidered postcard Honour to Australia sold for \$42.99 after 18 bids.

AUSTRALIAN CITIES AND TOWNS - ADELAIDE

amusements. Magic Mountain was demolished in 2004 and replaced with The Beachouse, a modern centre which opened in mid 2006. A Ferris wheel is a popular amusement during school holidays and is a prominent feature of the area.

Apart from its seaside suburbs Adelaide has become known for a number of events such as the Henley-on-Torrens Regatta first reported on in the Express, 20th August 1881. Many clubs use the Torrens Lake for practice for a number of regattas.

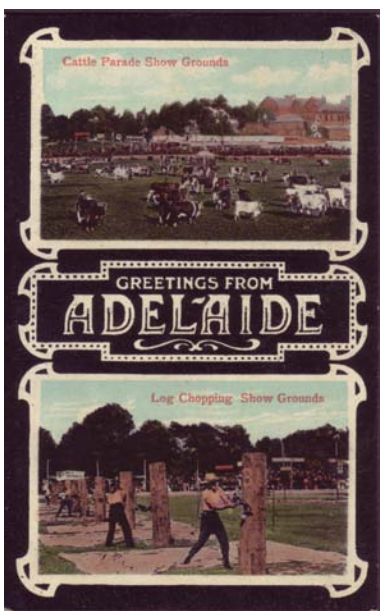
The Christmas tradition of the Magic Cave at John Martin's store in Rundle Street (now Mall) may date back to 1896. In 1933 Edward Hayward instigated the first John Martin's Christmas Pageant, which from 1934 has travelled the streets of Adelaide



From G & G Series.



A Genuine Kodachrome Reproduction by Nuolorvue Productions.



and concluded with Father Christmas arriving at the store and entering the Magic Cave. The pageant is now known as the Credit Union Christmas Pageant and is held each year on the second Saturday of November.

The first Show was held 4 years after settlement in the yard of Fordham's Hotel, in Grenfell Street on 8 December 1840. February 1844 saw a combined show held under marquees and tents among the gum trees in Botanic Park. The Botanic Park site became an ever expanding display of marquees, stalls, booths and amusements until 1859. A permanent exhibition building was built at a cost of £2,000 near the old marquee site and contained the largest floor area of any building in the Australian colonies. It was completed by the end of 1859 and was ready for the 1860 Autumn Show.

The Battle of Jutland - by John Bell (Continued)

loss of 844 officers and men. The Light-cruiser Fauenlob and several Torpedo-boat Destroyers were also sunk, but like the Battle-cruiser Lutzow and the Light-cruisers Elbing and Rostock which were all scuttled because of so much damage, many survivors were taken off by other ships keeping casualties down.

Jellicoe received no reports on the sightings and skirmishes that were taking place behind him so keeping to the course that he thought was placing the British battleships between the German ships and their base at Wilhelmshaven allowed Scheer and his fleet to escape by cutting through the rear of the British line.

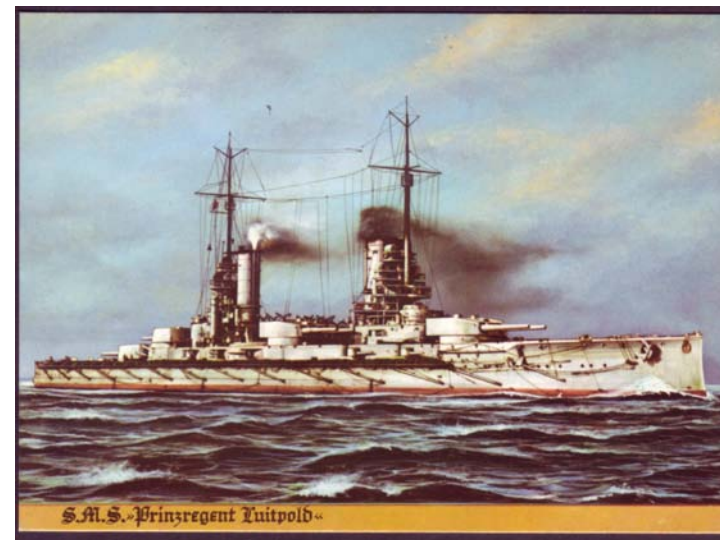
By 4.00am GMT, June 1st, Jellicoe had the fleet steaming back to the North but it was too late as he received a message from the Admiralty placing the German fleet 35 miles to the East of his position and steaming South at 16 knots, he could not catch them now.

Result, etc. in next issue.

John Bell



Modern card with SMS Pommern the only German Pre-dreadnought Battleship sunk at the Battle. Was in the II Battle Squadron at the battle.



Modern card with SMS Prinzregent Luitpold German Dreadnought Battleship, 24,000 tons, ten 12 inch guns, completed 1913. Was in the III Battle Squadron in the battle.

A LOOK BACK IN POSTCARD TIME by John Bodnar

I was having a clean out recently and came across this article in the now defunct Adelaide newspaper "The News", Thursday August 3, 1989 on page 41 and would like to share it with you. The article was in the Business section of the newspaper and was titled "'Hot' item for small collectors". It was authored by the Antiques specialist Peter Jervis.

In the article he states:

"Here's a growing investment opportunity within reach of even the most cash-strapped collector.

An area where the market begins at about 50c, with good examples for \$3-\$5 and absolute top-of-the market items costing around \$100-\$500.

The items are the humble early postcard, especially, but not exclusively, the Aussie variety".

He continues his article detailing the boom times the postcard enjoyed and makes mention of the fact that many outback and country areas did not enjoy telephone communications, so "the postcard carried the news and best wishes of countless writers across the nation and around the world".

Mention is also made of the work of the best Australian political cartoonists and artists of the early days (such as Norman Lindsay) who worked for the "Bulletin", finding its way to postcards. Their cards are much sought after by collectors with prices topping \$300.

He further states:

"The majority of SA antique and shops dealing in collectables have bundles of old postcards in stock.

But few, if any can boast a collection to rival that of Hellen Ellis, of Stuff n' Nonsense, on Unley Rd.

.....

She recounts a long time fascination with the cards and their messages and has seen some of 50c cards soar to more than \$20 in the past decade. "Hot" items now include absolutely anything military, vehicles, ships, and trains, advertising cards, embossed cards, cricket, cards featuring fairies and of course the so-popular nudes and naughties".

I can recall going to Mrs. Ellis' shop on Unley Road in search of postcards for my collection. To this day I can still remember how neat her shop was (it was obvious that a woman was in charge) and how she organised her postcard stock to enable easy browsing. Her shop was a delight to visit.

I do not know of Helen Ellis' whereabouts today, but would like to thank her for her foresight in recognising the value of postcards (bearing in mind the contempt they were held in by some in philatelic circles) and thereby enable me to obtain some wonderful postcards for my collection.

If readers had taken notice of Peter Jervis' advice, remember he wrote the article twenty one years ago they would have been able to amass a collection of postcards of substance and value.

THE HUMBLE POSTCARD HAS COME OF AGE

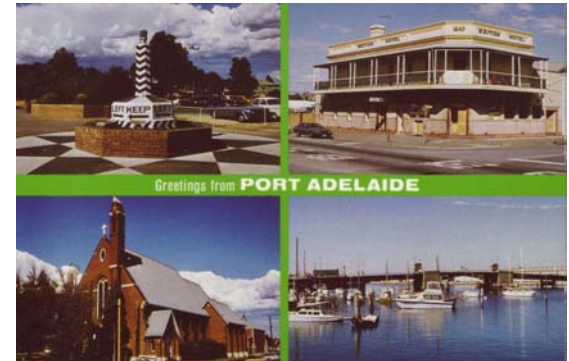
AUSTRALIAN CITIES AND TOWNS - ADELAIDE

department and variety stores as well as arcades, hotels and cafes. Many of the buildings in the postcard have now been demolished to make way for modern multi-storey stores and carparks. The western end of the street has been closed to traffic and declared a mall, the central area being paved and holding seats under shady trees, fruit and icecream stalls, etc., as well as silver ball decorations and pig statues.



SA State Tourist Bureau and Intelligence Office postcard stating the population of South Australia is 410,000. c.1910

Port Misery was renowned for its mangrove swamps and the difficulties encountered travelling the 14 kilometers to Adelaide and officially became Port Adelaide on 23 May 1837. By the year 1900, more than a thousand ships called in at the port wharves every year. Today, Port Adelaide continues to be the main service point for shipping in the State with over 20 wharves.



Made in W.A. for Australian Souvenirs Pty. Ltd., S.A.

Glenelg was established in 1836, is the oldest European settlement on mainland South Australia, and is where the proclamation was read. Glenelg's first jetty was opened on April 25, 1859, and was used not only by fishermen but also to accept cargo from ships, including a mail service operated by P&O, until Port Adelaide replaced it as Adelaide's main port. Glenelg has been a popular spot for recreation and leisure for much of its history with its own Luna Park operating from 1930 to 1934. Next was Magic Mountain which opened in 1982 and featured water slides, mini-golf, bumper boats, dodgem cars and many other



Distributed by Terry Castle & Co., Adelaide.

AUSTRALIAN CITIES AND TOWNS - ADELAIDE

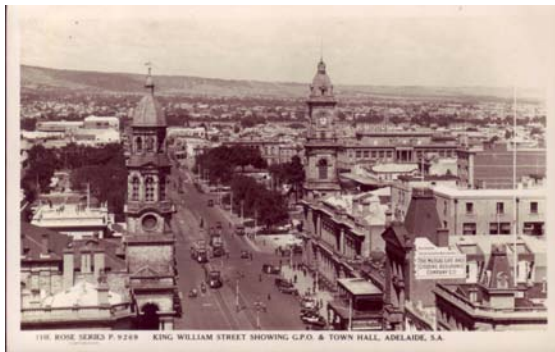
The city area has boundaries of North, South, East and West Terrace. King William Street divides this area running from North to South and contains many historic buildings including the GPO built between 1867-1872 on the site of the first post office which opened in 1851 and extended in 1891-92. Also on King William Street is the Town Hall built 1863-1866 and famous for an appearance by The Beatles on the balcony in 1964 which attracted an estimated 300,000 fans, their biggest crowd. It serves as the seat of the Adelaide City Council and has function centre facilities available for hire.

North Terrace is the where the Railway Station, Parliament House, Government House, the Public Library, Museum, Adelaide University, Royal Adelaide Hospital and Botanic Gardens can all be found. Most of these buildings have been rebuilt or extended since the card shown was produced. The dome of the Exhibition or Jubilee Building can just be seen—in 1919 the Jubilee Building and Showground was converted into a hospital and quarantine camp to cope with the massive European influenza epidemic that killed an estimated 21 million people (563 South Australians).

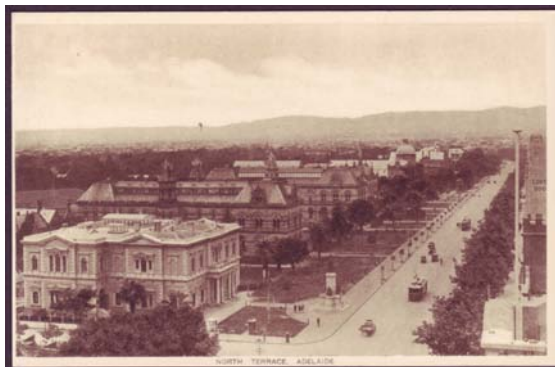
Rundle Street is the first street south of North Terrace and is the home of many of the large



Adelaide scenes by C.A. Pitt Ltd. c.1930.



King William Street with the GPO on the right and the Town Hall on the left. The clock was added to the Town Hall in 1935 so this scene is earlier than that date.



North Terrace looking east showing the many public buildings and the Adelaide hills in the background.

BOTTLE NOSED DOLPHINS

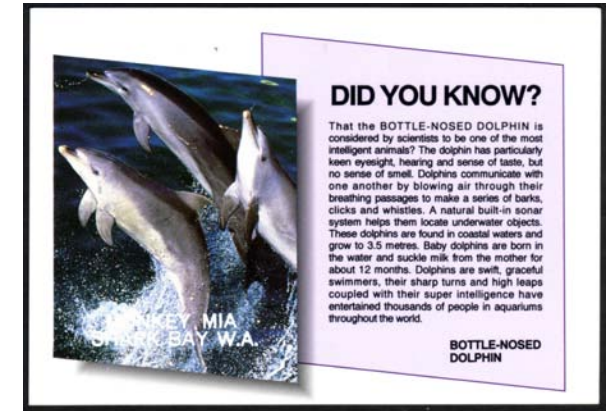
STORY CARDS like this one stimulate interest in subjects which may otherwise be overlooked.

Bottlenosed dolphins are actually small whales. They are air breathing mammals so, even though they have adapted to the marine environment, they still must come to the surface to breathe through the blowhole on top of their heads. This blowhole is located on the dorsal surface of the head and consists of a hole and a muscular flap. The flap is closed during muscle relaxation and opens during contraction. Dolphins are voluntary breathers who must deliberately surface and open their blowholes to get air. They can store almost twice as much oxygen in proportion to their body weight as a human can. This is an adaptation to diving. The bottlenose dolphin typically rises to the surface to breathe through its blowhole 2-3 times per minute, although it can remain submerged for up to 20 minutes. They can breathe while "half-asleep". During the sleeping cycle one brain hemisphere remains active while the other hemisphere shuts down. The active hemisphere handles surfacing and breathing behaviour. The daily sleeping cycle lasts for approximately 8 hours, in increments of minutes to hours. During the sleeping cycle dolphins remain near the surface swimming slowly or "logging", occasionally closing one eye.

Bottlenose dolphins are sleek and streamlined and can travel at speeds of up to 35 kilometres per hour. They have a prominent dorsal fin, which can be seen slicing through the water. They vary in size, shape and colour depending on where they are found. In general dolphins have a dark grey back and a light grey belly. This helps to camouflage the animal so when potential predators (such as killer whales or sharks) look up from the deep, the light grey belly blends in with bright surface waters. When seen from above, the grey back blends in with the deep dark waters below. The dolphin calves weigh around 15-30 kilograms at birth and around 70-130 centimetres long. They will grow up

to seven times their original body weight in their first year. An adult will reach 2-4 metres and weigh between 150-650 kilograms. They can live to over 30 years of age.

Bottlenose dolphins are common in temperate and tropical seas all over the world. There is an inshore species that is often seen along the coast, in estuaries and even in rivers, and an offshore species that can be found in the open ocean. They can be found in all of Western Australia's marine parks but Shark Bay Marine Park is renowned for



At Shark Bay, W.A. produced by Murray Views, Gympie, Queensland.



Australia Post postcard with illustration by Ego Guiotto.

BOTTLE NOSED DOLPHINS

its friendly dolphins at Monkey Mia which regularly visit the beach to interact with people and accept fish from them. Rangers supervise this to make sure the dolphins aren't given too much food so they will continue to forage in the wild. They eat around 15 kilograms of food per day consisting of a wide variety of fish, squid and octopuses. They may be able to dive to depths of more than 600 metres to catch food and use echo-location for hunting and navigating. The clicking sounds they make travel through the water hitting objects up to 200 metres in front and echoing back to the dolphin, which allows them to work out the size, shape, speed, distance and direction of their prey.



Published by Frye & Smith Ltd., for Sea World, San Diego, California.

Working as a group, dolphins can trap schools of fish or squid by rounding them up and diving into the middle to feed, swallowing their food whole and head first. "Strand Feeding" is an inherited feeding technique used by bottlenose dolphins near and around coastal regions of South Carolina. When a pod of bottlenose dolphins finds a school of fish they will circle the school and trap the fish in a mini whirlpool, then they will charge at the school and push their bodies up onto a mudflat, forcing the fish onto the mudflat as

well, then crawling around on their sides consuming the fish they washed up on shore.

Some Mauritanian dolphins cooperate with human fishermen by driving a school of fish towards the shore where humans await with nets. In the confusion of casting nets, the dolphins catch a large number of fish as well.

At least some wild bottlenose dolphins use tools. In Shark Bay dolphins place a marine sponge on their rostrum, presumably to protect it when searching for food on the sandy sea bottom. This has only been observed in this bay (first in 1997), and almost exclusively by females. A 2005 study showed that mothers most likely teach the behaviour to their daughters.

Near Adelaide in South Australia, three bottlenose dolphins "tail-walk", whereby they elevate the upper part of their bodies vertically out of the water and propel themselves along the surface with powerful tail movements. Tail-walking mostly arises via human training in dolphinariums. In the 1980's, a female from the local population was kept at a local dolphinarium for three weeks and the scientist suggests she copied the tail-walking behaviour from other dolphins. Two other wild adult female dolphins have now copied it from her.



Sea World, California, produced by Mike Roberts Color Productions, CA.

AUSTRALIAN CITIES AND TOWNS - ADELAIDE

One of the most common traits of the postcard collector is to collect the town they were born in or consider as their home town. Adelaide is the home of the Australian Postcard Society and as such deserves the honor of being the first featured city in the Bulletin.

South Australia is the driest state in the driest continent of the world, the lakes showing on the map being dry salt pans until the rare occasions when heavy tropical rainfall flows inland.

South Australia is in the southern central region of Australia and is 3051 kms from Darwin in the north, 2716 kms from Perth in the west, with Melbourne 732 kms, Canberra 1198 kms, Sydney 1415 kms, Brisbane 2055 kms, and Cairns 3384 kms away, all in the eastern states.

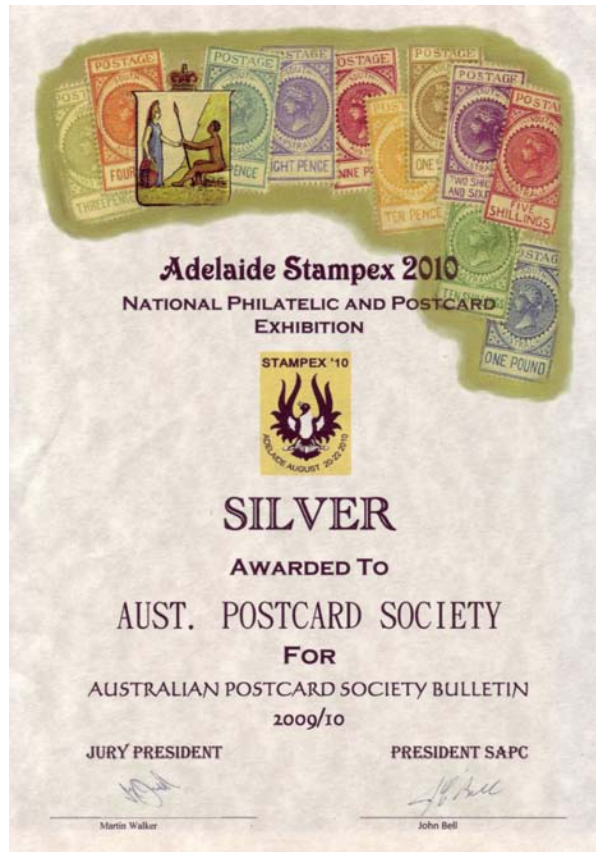
Adelaide is the capital city of South Australia, situated on the plains between St Vincent Gulf and the Mt Lofty Ranges.

The city was planned by Colonel William Light after his survey in 1837 with two distinct sections, the southern part forming the city proper and the section north of the River Torrens becoming known as North Adelaide.

There are 5 parks incorporated in the Adelaide city section with the largest, Victoria Square, being in the centre of the city, and four smaller squares in each of the surrounding quarters of the city.

Both the Adelaide and North Adelaide areas are surrounded by parklands and have wide tree lined streets.





ADELAIDE STAMPEX 2010 RESULTS FOR BULLETIN ENTRY

As reported in the last Bulletin we were very pleased to obtain a silver medal at Stampex 2010 so we have to show off both sides of the medal (enlarged), and the Certificate (reduced).

The rules required that a complete year of items published be submitted which meant that Bulletins 1-4 were scrutinized by the Judges of the Literature Section of Stampex. Points were awarded for Treatment of Contents 27; Originality, Significance and Depth of Research 27; Technical Matters 11; and Presentation 4; making a total of 69 points to receive the Silver Medal.

A big thank you to the people who have submitted articles for inclusion in those and later issues. We would like to encourage all members to submit articles to share with everybody what they have learned and enjoyed about their collecting interest. The endless variety of subjects which appeal to different people is truly amazing and the knowledge gained from collecting a particular topic can only be appreciated by others if it is shared. We look forward to receiving more articles in the future.

The Editors

BOTTLE NOSED DOLPHINS

Their considerable intelligence has driven inter-action with humans and they are popular from aquarium shows and television programs such as “Flipper”. The species sometimes shows curiosity towards humans in or near water. Occasionally they rescue injured divers by raising them to the surface. They also do this to help injured members of their own species. In November 2004 a dramatic report of dolphin intervention came from New Zealand. Four lifeguards swimming 100 meters off the coast near Whangarei were approached by a shark. Bottlenose dolphins herded the swimmers together and surrounded them for forty minutes, preventing the shark from attacking as they slowly swam to shore. Also in New Zealand, in 2008 a female Pygmy Sperm Whale and calf became stranded on the beach. Rescuers attempted unsuccessfully to refloat them four times. Shortly a playful bottlenose dolphin known to local residents as Moko arrived, and after apparently communicating with the whales, led them 200 metres along a sandbar to the open sea, saving them from imminent euthanasia. They have also been trained by militaries to locate sea mines or detect and mark enemy divers.

The dolphins are very social animals that live together in pods. Inshore pods may have around 12 members and off-shore pods may number in the hundreds. Within the pod there is a strong sense of unity or bonding, with lots of inter-action between the dolphins in the group; touching, chasing, making noises, etc. They are highly active and can be frequently seen tail slapping, riding on bow waves created by boats, surfing waves or leaping playfully into the air.



Marineland of the Pacific, produced by The Gray Line.

They will chase one another, roll over each other and carry objects such as seaweed. Adult males live mostly alone or in groups of 2-3 and join pods for short periods of time. Adult females and young dolphins normally live in groups of up to 15 animals, however they live in fission-fusion societies of varying group size within which individuals change associations often on a daily or hourly basis. Typically, a group of adult females and their newborns associate in a pod, while older juveniles inhabit mixed pods. Pods can join to form groups of 100 or more, occasionally exceeding 1,000.

Dolphins have many partners over a lifetime and mate all year round. Females begin to breed from about six years of age and have a calf every two to three years. Calves are born throughout the year although most are born in spring and summer after a gestation period of 12 months. Calves are born tail first so that they do not drown and their mother quickly pushes them up to the surface for their first breath. Calves suckle their mother's milk for up to 18 months although they begin eating fish at about 6 months of age and remain with their mother for about six years.

Males fight for rank and access to females. Mating occurs belly to belly. Dolphins have been observed engaging in intercourse when the females are not in their estrus cycles and cannot produce young, as well as when they can.

BOTTLE NOSED DOLPHINS

During mating season males compete vigorously with each other through displays of toughness and size with a series of acts such as head-butting. They display aggression towards sharks, certain Killer whales and small dolphin species.

At least one population, off Scotland, has practiced infanticide, and also has attacked and killed Harbour Porpoises. University of Aberdeen researchers say the dolphins do not eat their victims but are simply competing for food. Similar behaviour has been observed in Ireland.

Some encounters with humans are harmful to the dolphins: people hunt them for food and they are also inadvertently killed as a by-catch of tuna fishing.

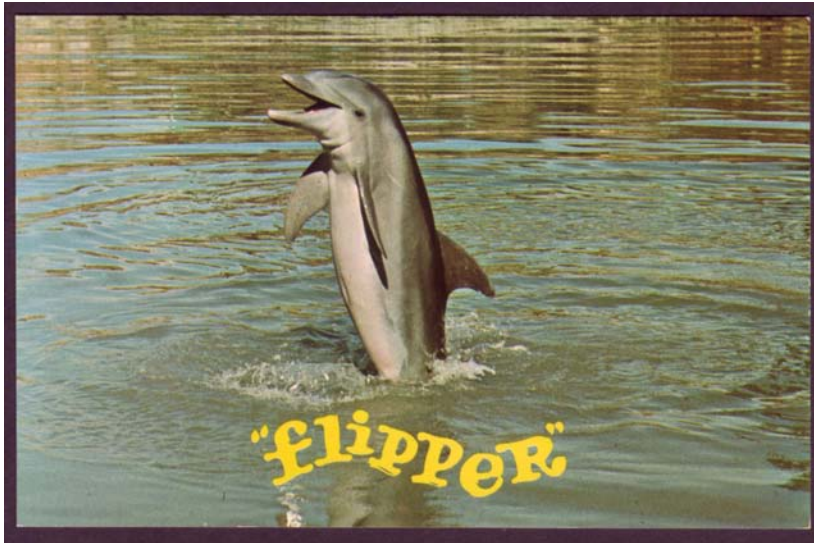
Bottlenose dolphins are not endangered. Their future is stable because of their abundance and adaptability. However, specific populations are threatened due to various environmental changes. The population in the Moray Firth in Scotland is estimated to consist of around 150 animals and is declining by around 6% per year from harassment, traumatic injury, water pollution and reduction in food availability. Likewise, an isolated population in Doubtful Sound, New Zealand, is in decline due to calf loss coincident to an increase in warm fresh-water discharge in the fiord. Less local climate change, such as increasing water temperature may also play a role.

The dolphins can be protected by helping to keep their environment clean. Take your rubbish home and if you find any floating at sea or on the coast, please pick it up.

Bottlenose dolphins often strand, either singly or in small groups.

If you find a stranded or entangled dolphin you should report it to the local fauna rescue representative. While you are waiting for help to arrive, keep it wet and cool, and keep it shaded so it doesn't get sunburnt, but remember not to obstruct the blowhole, so the dolphin can breathe.

The information in this article was gained from Wikipedia and the Shark Bay website.



Flipper, star of Ivan Tors TV program performing his tail walking act at Miami's Fabulous Seaquarium.
Color Photo by Steve Wever, produced by Florida Natural Color, Inc., Miami, Fla.

PHILICIA ANTIQUES & COLLECTABLES PTY. LTD.

(Proprietors Phil & Chris Sunman)

**317 GOODWOOD ROAD,
KINGS PARK SA 5034**



SPECIAL DISCOUNTS GIVEN TO
MEMBERS OF THE
AUSTRALIAN POSTCARD SOCIETY



Buying and Selling **QUALITY** Old Wares
Specialising in Ephemera

300,000 Postcards & 50,000 Cigarette Cards in Stock

Antique photographs, bill heads, tickets, sporting memorabilia,
trade cards, military ephemera, magazines, rare books,
catalogues, prints.

Also an extensive stock of china, glass, Australian pottery, lamps,
jewellery, dolls and toys, furniture, statuary, Australiana, tins,
packaging, etc.

Business Hours -

**Monday—Saturday 10.00am—5.30pm
Sunday 12noon—5.30pm**

Contact Details -

Telephone/Fax (08) 8357.8177 or (08) 8357.8077
After Hours (08) 8269.1835 Mobile 0409.695.234
E-mail: philicia@tpg.com.au