

Australian Postcard Society Inc.

Meetings: 7.45p.m. — 4th Thursday of the month
except December
(11 meetings only per year)

Where SAPHIL House, 22 Gray Court, Adelaide

Who Anybody interested in postcards

Costs Gold coin donation to cover supper costs.

Auction held each meeting—Forms available from Secretary

Syllabus for 2013

Date	Invited Display - (Up to 5 frames)
24th January	Committee members - 1 frame
28th February	Michel Roland - Surprise night
28th March	Errol Hehir - Japanese Parks & Gardens
25th April	Betty Cornish Trophy 6 Page Competition -Theme - Children Glen Thomas - Miniature Trains
4-5th May	POSTCARD EXHIBITION, Drill Hall, Adelaide—CANCELLED but will be held in 2014
5th-11th May 23rd May	National Postcard Week Jeff Newman - Malaya
27th June	Ray Thompson - Switzerland
25th July	A.G.M. Empire Trophy 8 Page Competition - Theme - Royalty and related to royalty.
22nd August	Janet Ingleton - Nautical
26th September	Joyce Aspinall - Tom Browne
24th October	Rob Halliday - Steam Trains
28th November	Christmas Supper - Bring a plate of food to share and your favourite Christmas postcard

Australian Postcard Society Inc.



BULLETIN

August 2013 Quarterly Issue No.18

WEBSITE ADDRESS: australian-postcard-society.com



How many of you sent postcards to friends and family with Australia's first National Postcard Week cancel?

There is now talk in the US of starting an International Postcard Week the first full week in October which falls on 6th-12th October this year. In Australia this fits in with Australia Post's Stamp Month, and in South Australia with our annual Stamp Congress where postcard entries form part of the competition. Check out this link and get started with designing your card now. internationalpostcard-week.blogspot.com/

Don't know about anyone else but we are certainly looking forward to some more sunshine when spring arrives soon. Flowers are beginning to appear, the first butterfly has been seen and weeds are growing very fast now.

From the Editors

ELECTED COMMITTEE:

President	Robert Halliday
Vice-President	John Bodnar
Treasurer	David Figg
Secretary	Linda Welden
Librarian	Robert Halliday
Publicity	Glen Northcott
Auction Superintendent	George Turner
Magazine Editors	David & Pauline Edwards
SAPC Delegate, Raffle & Online Auctioneer	Claire Thomas

PATRON	Phil Sunman
Website Managers	Jeff & Yvette Trinidad
Auditor	Andy Kovaleff

Any questions or matters of interest

contact The Secretary,
Linda Welden,
PO Box 281,
Edwardstown,
South Australia, 5039.

email: lindaw3456@gmail.com
Phone: 0421 367 665

Membership Fees—1st July-30th June

SINGLE	\$20.00
JUNIOR up to 16	\$ 6.00
FAMILY	\$30.00
OVERSEAS	US\$30.00 or equiv. £

CONTENTS

Front Cover:
Back Cover: 2013 Syllabus

Club Information	P.2,3
Coming Events	P.3
Around Australia, Cairns and Surrounds	P.4-8
Conundrum Postcards by Demaris Swint	P.9-10
Humorous Cancel by Graeme Chequer	P.10
Vale, Allen Downes	P.11
Installment Cards, by Pauline Edwards	P.12-16
Humor	P.18
Advertisements	
Philicia Antiques, Adelaide	P.17
Abra Card Abra/Roycroft Melbourne`	P.18
Members wants lists	P.19

WELCOME TO NEW MEMBERS

Andrew Puccetti, Highbury, SA

Back issues of the Bulletin are available at \$5 plus postage.

Club owned postcards are available for sale at meetings.

BECOME INVOLVED -

Bring any interesting items for "Show and Tell".

Members can bring their items for sale to meetings.

Bring auction lots to meetings.

ARTICLES FOR THE BULLETIN

Write an article about any interesting cards or small groups of cards in your collection for inclusion in the Bulletin. The committee has approved for trial a \$1 per page credit off membership fees for articles submitted with one picture and the rest information.

Please remember that sharing your pleasure and knowledge about your collection is what makes reading the Bulletin and attending meetings more enjoyable for all.

Thanks to the members who have already contributed to the magazine - well done. Keep them coming everybody.

MEMBERS ADVERTISEMENTS:**WANTED TO BUY:**

DC3 aircraft postcards, Swiss postcards prior to 1960, hospitals and cards dated 1943. Anybody with any of these cards to spare please contact Ray Thompson with details on Phone: (08) 8258.9022.

Australian Private postcards 1898-1905 by Robert Jolley, Melbourne; G.L. Mueller, Adelaide; Ernest Gall; Donald Taylor & James Taylor; Hussey & Gillingham. Also Early German cards of South Australia 1898-1903. Bronte Watts, Unit 3, 3 Cosgrove Street, Magill, SA, 5072. Phone (08) 8431.0549. email: wtsbrnt@yahoo.com.au

Australian Comic Postcards. Collector and researcher looking for singles, groups, duplicates, hoards, large/small collections. Anything considered. Contact Gary Davies, PO Box 107, Magnetic Island, Queensland, 4819. email: ccbnq@optusnet.com.au

Metamorphic postcards in good condition. Contact David Edwards, Phone: (08) 8250 0484 or email: mmstamps@bigpond.com

Postcard of Newmarket Hotel, Adelaide. Must be an early card in good condition. Contact Pauline Edwards, Phone: (08) 8250 0484 or email mmstamps@bigpond.com

Any postcards relating to Australian National Rifle Association shooting contests for selection and competitions held at Bisley Camp in England. Contact Lorenzo, Ph: (08) 83361340, or email: lorenzog@tpg.com.au

Silk cards in good condition bearing military badges; flags of America, New Zealand, Wales, India, and Italy. Contact Lorenzo, email: lorenzog@tpg.com.au or Phone: Ph: (08) 83361340.

Picture Postcards of the Post Offices in Vienna; Cracow; Budapest; Lemberg and Kiev. Please contact John Bodnar advising of your asking price. email: mibetco@senet.com.au or PO Box 395, Edwardstown, SA, 5039, Australia. Thank You.

Postcards of Kalamunda (West Australia), Goa (India), Lord Howe Island & Magnetic Bay (Queensland) and Norfolk Islands Email: pk@bankofideas.com.au or Call Peter Kenyon on: 62931848

Postcards of Port Adelaide, Semaphore, Exeter, Largs, Outer Harbor area, especially early undivided backs, real photographic and advertising cards. Contact Ron on (08) 8396 3546 or leave message.

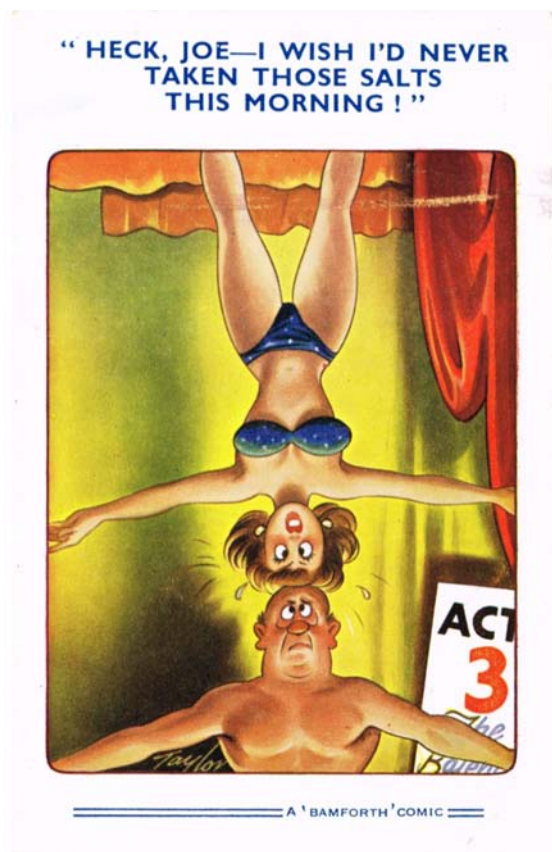
Postcards and maxicards relating to royal tour of the Commonwealth, begun as Princess Elizabeth in 1952 and continued as Queen Elizabeth in 1953/4. Contact Martin Walker on saphilatelists@gmail.com

Transport and travel ephemera, preferably 1960's 70's, e.g. postcards, tickets, menus, South Australia and interstate including Trans-Australian and Overland Railways, Adelaide buses, trains and trams. Contact Ray Thompson, email ptolemy1939@gmail.com or phone 82589022, or write to C/o Box 23, Salisbury North, 5108, South Australia

WANTED TO TRADE - National Postcard Week postcards.

Postcards to be sent stamped and cancelled and enclosed in an envelope for protection. Send to Demaris Swint, PO Box 746, Alamo, Texas, 78516-0746.

HUMOUR - IT DOESN'T CHANGE MUCH OVER THE YEARS



Our AGM was held last meeting and Robert Halliday elected as our new President and Glen Northcott as Publicity Officer. Obviously the theme of Royalty for the Empire Trophy 8 page competition was not popular as no entries were received.

POSTAL AUCTIONS have been discontinued.

Cards belonging to the club and those previously submitted to the club for future auctions will be offered for sale on eBay by Claire Thomas (Seller shandy2808), store name

Postcards Online. <http://stores.ebay.com.au/Postcards Online>

Members buying from this site/store should inform Claire if they are a club member and 10% commission from the sale will then be paid to the club. Anybody interested in having Claire sell their cards should contact her for relevant fees and charges.

COMING EVENTS:

If anybody is aware of events of note to postcard collectors please advise the committee so that it can be included in the Bulletin.

August

17-18th—Strathalbyn Antiques, Hobbies & Collectables Fair.

September

13-16th—Upper Hutt (NZ) National Exhibition

14th—Printed Collectables Club Fair, Reid Avenue, Hectorville.

21-22nd—National One Frame Exhibition (with Postcards), Brisbane (15 sheets)

October

12-13th—State Congress, Drill Hall, Torrens Parade Ground.

GOOD NEWS

David Figg, APF Convenor, Picture Post Card (PPC) Class, has reported as follows:-

Late breaking news received via Bengt Bengtsson (Swedish member on Australia 2013 Jury) is that Sweden will now be accepting PPC as a Class at their National Exhibitions.

Seong-Kwon Kim, a Director on the Republic of Korea Federation attended the Australian Postcard Society Meeting in Melbourne and has since advised that he will push for inclusion of the Class in future National Exhibitions in his country and work with their neighbours in China and Japan. He also sent me a file on the rules for exhibiting PPC in the UK.

My understanding is that PPC are currently accepted at National Exhibitions in - Australia, New Zealand, UK, USA, South Africa, France and now Sweden with Korea/Japan/China on the drawing boards.

Also from David Figg:

Our Bulletin achieved a silver bronze medal at the World Stamp Exhibition in Melbourne and the APF Executive has approved our application for a Journal Support Grant of \$400. Subject to furnishing the PDO with a set of Bulletins each year, we are guaranteed to receive \$400 per annum for the next three years. After that 3 years at \$300pa followed by three years at \$200pa subject to re-exhibiting in Literature Class (every three years) and achieving at least a Silver-Bronze medal.



BUYING - SELLING

**Old Books, Postcards, Trade Cards,
Cigarette Cards, Ephemera,
Autographs, Sheet Music, Anything Printed.**

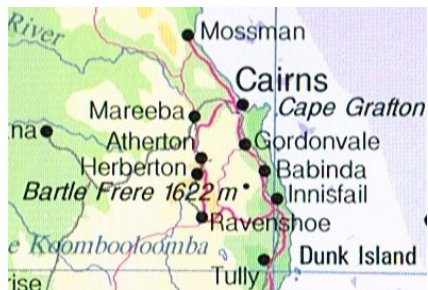
ABRA CARD ABRA ROYCROFT

680 High Street, East Kew, 3102, Victoria

Phone/Fax (03) 9859 4215

AROUND AUSTRALIA - CAIRNS & SURROUNDS, NORTH QUEENSLAND -

by Pauline Edwards Based on information from Wikipedia and other websites



The first recorded human occupants of the Cairns area were Australian Aborigines. Traditional local aboriginal stories recall hunting and fishing on land that once extended past Green Island during a time of lower sea levels. Archaeological evidence shows aboriginal peoples living in rain-forest in the Cairns area for at least 5,100 years, and possibly for much of the often suggested 40,000 year period. 2011 census statistics show that 9% of the Cairns region population are of Aboriginal and Torres Strait Islander descent.

On 10th June 1770, English maritime explorer Lieutenant James Cook visited and gave the European name of Trinity Bay to the inlet after the day—Trinity Sunday—on which it was discovered. The land area was mainly a narrow strip of mangrove swamp between the dense forest of the mountains and the sea. A century later gold discoveries at Palmer River to the north and Hodgkinson River to the west resulted in an influx of prospectors which led to the first large non-indigenous population to inhabit Far North Queensland. The building of the Douglas Track to the coast and the establishment of a coastal wharf and settlement followed, with the township of Cairns being inaugurated on 1st November 1876. The first local land sales were in February 1877, followed by the commencement of local industries such as the saw mill and thousands of acres of crop plantations to the south and east of Cairns. The first mayor of Cairns, R.A. Kingsford, was elected in 1885.



Early card of Cairns produced by Paxton Bros., Cairns

The necessity to transport provisions inland and return with ore and timber to the coast led to the construction of a railway line from Cairns to Herberton and brought many immigrant workers (predominantly Italian and Irish) to the area. The Cairns-Kuranda section even today is considered an engineering feat of tremendous magnitude. Dense jungle and cliffs with sheer drops of up to 327 metres presented an enormous challenge for engineers and workers alike. Hundreds of men were employed to build the 15 hand-made tunnels, 93 curves, 37 bridges and 75km of track that stand as a monument to the pioneers of tropical North Queensland.



This real photo card shows the size of the logs being sent to the mill, also the Kureen Hotel in the background. My research couldn't find any record of the railway line going to Kureen but did show that the Hotel was removed to Tolga in 1929 and is still operating there. Both these towns are on the tablelands inland from Cairns.

Numerous worker settlements and hotel stores were established on the range which generated demand for opening up land to be used for agriculture, with a pre-dominance of sugar cane on the

PHILICIA ANTIQUES & COLLECTABLES PTY. LTD.

(Proprietors Phil & Chris Sunman)

**317 GOODWOOD ROAD,
KINGS PARK SA 5034**



**SPECIAL DISCOUNTS GIVEN TO
MEMBERS OF THE
AUSTRALIAN POSTCARD SOCIETY**



Buying and Selling **QUALITY** Old Wares
Specialising in Ephemera

300,000 Postcards & 50,000 Cigarette Cards in Stock

Antique photographs, bill heads, tickets, sporting memorabilia,
trade cards, military ephemera, magazines, rare books,
catalogues, prints.

Also an extensive stock of china, glass, Australian pottery, lamps,
jewellery, dolls and toys, furniture, statuary, Australiana, tins,
packaging, etc.

Business Hours -

Monday—Saturday 10.00am—5.30pm

Sunday 12noon—5.30pm

Contact Details -

Telephone/Fax (08) 8357.8177 or (08) 8357.8077

After Hours (08) 8269.1835 Mobile 0409.695.234

E-mail: philicia@tpg.com.au



No.641, An Ice Palace in Canada.

Another slightly different undivided back card is shown here.

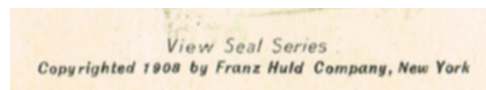
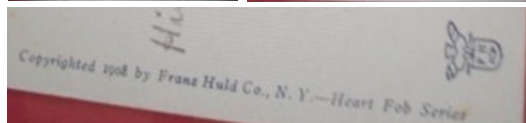
While looking for cards produced after the installment sets I found the following cards which made me wonder whether a registered company was formed with a new trade mark, and whether the company was taken over or bought out by another firm with the L&S trade mark as shown with the cat series which has a copyright date of 1911 in the name of Franz Huld.



A Valentine's Day card with violets in an embossed heart shape from The Heart Feb Series, marked as follows-

Copyrighted 1908 by Franz Huld Co., N. Y.—Heart Feb Series

The card back is similar to the View Seal Series but differs in the copyright wording.



The View Seal Series carries an embossed seal of a city on the front with small scenes around the edge, possibly one of the first multiview cards to be produced.

As can be seen it says "Copyrighted 1908 by Franz Huld Company, New York". This is the only reference I have seen to a "company" on any of the cards.



The Trade Mark has changed and the card has a divided back.



This card "Cat Series No.3 shows "Copyright 1911 by Franz Huld, N.Y.". It has a totally different Post Card heading, has a divided back, and instead of carrying the Franz Huld trade mark it is marked "L&S". I have been unable to find any publisher with this trade mark or initials.

A difficult publisher to know where to end the research, and with the number and variety of cards produced it is hard to understand why there was a need to file for bankruptcy.



Barron Falls, Kuranda, during the wet season.
Produced by Murray Views, Gympie, Q.

tableland. Kuranda, the first large area at the top of the range suitable for development, was surveyed in 1888. In 1900, the importance of preserving the natural environment around the Barron Falls was recognised and 30 square kilometres were gazetted as a National Park.

The Cairns area which began as a beche-de-mer (sea cucumber) fishing station, continued to grow with fishing and pearling becoming large industries attracting a new type of explorer. Towards the end of the century, the agricultural production of the

local Chinese community had risen to tens of thousands of bushels of rice, corn, bananas and pineapples. The diversity of industries that were now well and truly established in the north guaranteed the long term viability of this tropical city.



Looking down across the Barron Valley.
Produced by Coloured Shell Series.

The construction of the tramway from Cairns to Mulgrave in 1897 linked areas immediately south of Cairns to the port. Other amenities followed with gas, water and electricity increasing the domestic comfort of residents, a new two storey brick and timber hospital being built as well as the Cairns High School & Technical College and the first Council Chambers.

In 1923 approval was granted for Cairns to be listed as a city, with some of the city's suburbs being located on flood plains. The Mulgrave River and Barron River flow within the greater Cairns area but not through the CBD. The city centre's fore-

shore is located on a mud flat which has recently been developed to include a swimming lagoon where locals and tourists can safely swim in an artificial pool capable of accommodating 1000 swimmers at a time and is patrolled by lifeguards while open from 6am-10pm daily.

World War I when labour and consumer goods shortages occurred highlighted the physical isolation of Cairns from the rest of Australia which continued until the opening in 1924 of the Daradgee Bridge outside Innisfail. Improvements continued and in 1935 the Barron Falls Hydro Electricity scheme began to provide power. Cairns first commercial radio station became operational in 1936, reducing the feeling of isolation during the wet season. The same year, the former inner-city red-light district of Sachs Street, a name regarded as an embarrassing coincidence to respectable Cairns citizens, had a name change to Grafton Street.

AROUND AUSTRALIA - CAIRNS & SURROUNDS, NORTH QUEENSLAND -

by Pauline Edwards - Based on information from Wikipedia and other websites - (Continued)

During World War II, Cairns was used by Allied Forces as a staging base for operations in the Pacific, with US Army, Air Force, and Royal Australian Air Force operational bases (now the airport), as well as a major military seaplane base in Trinity Inlet, and US Navy and Royal Australian Navy bases near the current wharf. Combat missions were flown out of Cairns in support of the Battle of the Coral Sea in 1942. Edmonton and White Rock, south of Cairns, were major military supply areas, and US Paratroopers trained at Gordonvale and the Goldsborough Valley. A Special Forces training base was established at the old "Fairview" homestead on Munro's Hill, Mooroolooloolo.



Card showing Marlin Jetty, Kuranda Train, Four Mile Beach at Port Douglas, Green Island and the Forceps Fish. Produced by Peer Productions, Cairns.

This base was officially known as the Z Experimental Station but referred to informally as "The House on the Hill". The 13th Army Advanced Ordnance Depot was transferred from Townsville to the Atherton Tableland from January 1943. As construction of the army's recreation and training facilities proceeded, one of the largest concentrations of troops, equipment and buildings on the Tableland was centred around Atherton, Tolga and Rocky Creek. Major construction projects included: Rocky Creek Australian General Hospital (AGH) containing a tent hospital of 2400 beds and a large sewage plant; Bones Knob radar station with its two massive timber towers; and Tolga Advanced Ordnance Depot. The depot contained stores, workshops, and stockpiles of plant and equipment, motor transport vehicles, and weapons, stored over a large area. On occasions there were between 50,000 and 100,000 troops quartered on the Atherton-Evelyn Tablelands, with an average constant of roughly 40,000 troops. They left for Port Moresby in August 1943. On the Atherton Tableland it took workers only eight days during March/April to build a new Mareeba airfield capable of taking United States Air Force B-17 Flying Fortresses. Later in the year there were nearly 10,000 Americans in and around Mareeba, which had a local population of 2,500. One year later, the Americans had gone.



A group of cards showing some of the colourful wildlife. Cassowary by G.K. Bolton, Cairns. The Whitelipped Tree Frog, Ulysses Butterfly and White Peacock, all by Peer Productions, Cairns.

After World War II, Cairns gradually developed into a centre for tourism. The opening of the Cairns International Airport in 1984 further helped establish the city as a desirable destination for international visitors.

Tinaroo was the first major water storage dam in Queensland constructed for irrigation purposes. The dam has a storage capacity of 407,000 mega litres and a surface area of 3,320 hectares. The dam wall is 533m long and at its crest it is 47m above the lowest part of its

Franz Huld, New York, 1900-1914 (Continued)



No.4—Fish—Copyr. 1906. Small letters on back.



No.5—Sea Serpent—Copyrighted 1906. Small letters on back.



No.6—Mosquito—Copyr. 1906. Small letters on back.



No.7—Rip Van Winkle—Copyr. 1906. Small letters on back.



Set No.9 Santa Copyr., 1906.

Set No.8, New York Life, is a 4 card set showing the skyline of New York City, which I have seen only once since I started collecting and it sold for nearly \$550 in August 2012.

Set No.9 is Santa as shown and is unusual in the fact that it carries glitter.

Set No.10 is a Christmas Tree.

Set No.11 is a female with a fishing rod and a heart on the end of the line while No.12 is the same with a male fishing.

Set No.14 shows an Easter Rabbit with a basket of eggs in addition to a walking stick, while No.15 shows a dressed Teddy Bear. These both show a copyright date of 1907.

I have not found any reference to set No.13 and believe this may have been seen as an "unlucky number" and therefore not used.

The fronts of Sets 1, 2, 3, and 5 show "Copyrighted 1905 (or 6), by Franz Huld, Publisher, New York.", while sets No.4, 6, 7, 9, 10, 11, 12, 14, and 15 show "Copyr. 1906, by Franz Huld, Pub., N. Y." The half-tone printed Set No.8, New York Life, shows a separate copyright note as COPYRIGHT 1906 BY FRANZ HULD N. Y." as well as "Franz Huld, Publ., N. Y."

Franz Huld, New York, 1900-1914 (Continued)



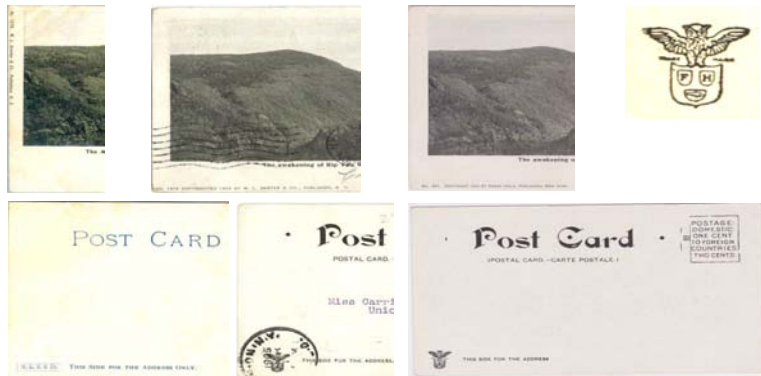
Huld is also shown as the publisher of a lovely chromolitho set of famous people with their birthplace which has a different type of back. The card shown was postally used in 1903. The series don't show a copyright date and are marked "FRANZ HULD Publisher New-York."



I have seen these same cards which appear to have been issued by two other publishers—without identification.

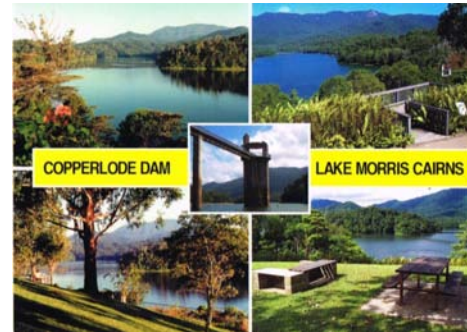


Another example of the same card being produced by Huld and another publisher is shown below where "The awakening of Rip Van Winkle" was produced in three different ways, e.g. the identification of the left card on the front reads "No 1516. M. L. Samter & Co., Publishers N. Y." and the back shows "M. L. S. & Co.". The centre example is marked "NO. 1516 COPYRIGHTED 1903 BY M. L. SAMTER & CO., PUBLISHER, N. Y." on the front while the back is different and carries the Huld trade mark. The example on the right reads "NO. 441. COPYRIGHT 1903 BY FRANZ HULD, PUBLISHER, NEW YORK", and the back is the Huld design, the same as the centre card—so it would appear the Trade Mark began to appear on the cards in 1903.



AROUND AUSTRALIA - CAIRNS & SURROUNDS, NORTH QUEENSLAND -

by Pauline Edwards - Based on information from Wikipedia and other websites - (Continued)



Multiview of Lake Moriss by Peer Productions, Cairns.

foundation. Its construction marked the beginning of a new Government policy to develop dams to supplement the river-dependent irrigation of farms. By the 1980s this had resulted in the construction of 24 major dams over a 30 year period.

Cairns has a tropical climate with generally hot and humid summers and milder dryer winters. The average annual rainfall is 1992mm over an average 154 days, mainly between January and March. In 1927 Cairns suffered widespread destruction from Cyclone Willis, and the extensive East Trinity dairy, timber and agricultural estate of Glen Boughton located

directly across the inlet from Cairns City never recovered from its losses. The city was again affected by heavy rain associated with a cyclone in 1939 which caused substantial flooding and resulted in the river changing its course, with the mouth of the Barron moved north from Casuarina Point on the northern Cairns esplanade to Ellie Point.

CLAIM TO FAME:

Sir Charles Kingsford Smith, aviation pioneer and grandson of Cairns' first mayor, made an aerial visit in 1932.

The South American cane toad was introduced to sugar cane fields to the south of Cairns in early 1935 to assist in the control of the cane beetle and has since spread to many other areas. The toxic animal developed into one of the worst feral pests in Australia's history, resulting in ecological disaster to many native species.



Great Barrier Reef Coral. Produced by G.K. Bolton, Cairns.

Between 1943 and 1946 the Australian Army undertook extensive anti-malaria drug experimentation. This work cleared Cairns of many mosquito breeding grounds, the source of numerous fever outbreaks, and contributed significantly to the knowledge, control and treatment of tropical insect-borne infectious diseases.

On 2nd April 2007 the Bureau of Meteorology reported that a possible tsunami was headed for Cairns following an earthquake in the Solomon Islands. Though the tsunami had an extremely minor impact on Cairns, major panic ensued and both the Kuranda Range road and the Gillies Range road leading to the Atherton Tableland became blocked as thousands of residents attempted to flee to higher ground. The panic was later considered helpful in that it exposed major faults in the city's emergency response planning, including the absence of sirens to warn people on the Esplanade, and the possibility of using Quaid Road as an evacuation route during emergencies.

In 2004 the local Djabugay rainforest Aboriginal group were given native title over Barron Gorge National Park, the first such claim to be recognised in Queensland, and the first in Australia to be granted out of court.

Continued overleaf.

AROUND AUSTRALIA - CAIRNS & SURROUNDS, NORTH QUEENSLAND -

by Pauline Edwards - Based on information from Wikipedia and other websites - (Continued)

TOURIST ATTRACTIONS—SO MANY— AND I PROBABLY MISSED SOME

The Great Barrier Reef which runs for more than 2300km along the northeast coast of Queensland, is made by live organisms, billions of tiny creatures known as coral polyps, and built over the last 600,000 years. It is the largest natural feature on earth and can be seen from space. The Species Conservation Unit of the Great Barrier Reef Marine Park Authority looks after conservation issues for species indigenous to the reef and provides advice to tourism operators and locals who use the reef on how to reduce risks to endangered species. Whales, dolphins, porpoises, sea turtles, saltwater crocodiles, sharks, stingrays, skates, giant clams and cone snails, sea snakes, more than 1500 species of fish and 200 species of birds can all be seen around the reef. The colourful reef fish live among 400 species of hard and soft corals that can be found on the reef and the coral spawning after the full moon in October is a popular attraction for divers from around the world. The outer Great Barrier Reef coral spawns in November and December and is just as spectacular if more difficult to access.

Boating, fishing, sailing, snorkelling and diving trips are available for those wishing to see and experience water sports, while bungee jumping, the MinJin swing and skydiving are available for the bravehearted.

The Cairns Wildlife Dome at the Reef Hotel Casino on Cairns Esplanade where you can take a guided walk of Australian flora and fauna – right in the centre of the city.

The rainforest with its abundance of greenery and wildlife. Around 1200 sq.km, Daintree Rainforest National Park located about 110 km north of Cairns is one of Australia's largest chunks of rainforest. It is said to contain 30 per cent of frog, marsupial and reptile species in Australia, about 65 per cent of Australia's bat and butterfly species and 20 per cent bird species. All of this is located in a space that is only about 0.2 per cent of the landmass of Australia.

The Kuranda Scenic Railway train begins at the rebuilt Cairns Railway Station which is integrated with the Cairns Central Shopping Centre and has platforms built underneath parking areas. It travels up the range along the Barron Gorge and offers breathtaking views of cane fields, jungle, and waterfalls, while traversing many tunnels and bridges, with a short stop to view the Barron Falls. Kuranda Station is one of the oldest in Australia and is very picturesque with its well looked after garden. Kuranda is home to markets and draws large crowds to the tourist attractions in the area which include the butterfly sanctuary, rainforest nature park, birdworld, koala and wildlife park, army duck tour of the rainforest, horse riding, quad biking, and the Pamagirri Aboriginal Experience where you can watch spear throwing, didgeridoo demonstrations and a traditional dance performance as well as learn to throw a boomerang.

The Sky Rail scenic cableway of 7.5km from Cairns to Kuranda over World Heritage rainforest opened in 1995, further promoting ecotourism in the region. The trip back to Cairns gives incredible views of the Barron Gorge, Redlynch Valley and beaches. *(On a personal note we found the cable cars are not fitted with windscreen wipers so travel in the rain restricts your view considerably.)*

Other features at the top of the range include numerous National Parks with their caves, waterfalls and gorges, the Cathedral and Curtain Fig Trees, Australian Venom Zoo, Bat Reach, woodworks, wineries, coffee farms, and a multitude of different museums.

North of Cairns there are many lovely beaches, Hartley's Crocodile Adventures where you can watch live crocodile feeding shows, and orchid farms with their variety of foliage and flowers of stunning colours and shapes.

Franz Huld, New York, 1900-1914 (Continued)



This shows a closer look at the printing and colours of part of the Alligator cards.

The backs of these two sets also differed in the size of the printing of "Post Card" and I assumed the same applied to the Dachshund, while the back of the Uncle Sam set was printed in a different colour—brown.

I decided to take a closer look at other cards produced by Huld to try and understand why this was so. I also thought this could possibly assist in the dating of cards and maybe the identification of other sets with unknown producers.

The earliest copyright date on a Huld card I have seen is a panorama card of New York which was marked Copyright 1900, and the earliest postal cancellation I noted shows the same year. Another card cancelled



No.3 Uncle Sam—large letters

1900 has the Private Mailing Card back which features the Statue of Liberty.



No.3 Uncle Sam, Copyrighted 1906



c.1900 Panorama card back.



Bathers, c.1902 card.



The "Cake Walk" Negro dance series and the Negro "Little Coon" series appear to be some of the earliest cards by Huld, and they both carry the Private Mailing Card back shown in sepia tones. The front note is "Franz Huld, Publisher, N.Y."

When Niagara Falls froze in 1902 Franz Huld produced a postcard of the scene and added glitter. The card is numbered 164 and is marked "FRANZ HULD, PUBLISHER, N. Y.", while the back shows Private Mailing Card with a female figure on the right. I have seen other early cards with this back.

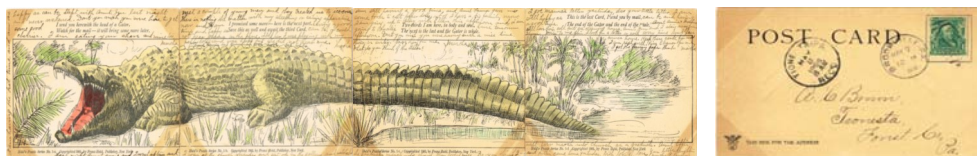
INSTALLMENT CARDS, what I have learned about them and their producers,
by Pauline Edwards

Franz Huld, 246 5th Avenue, New York, 1900-1914

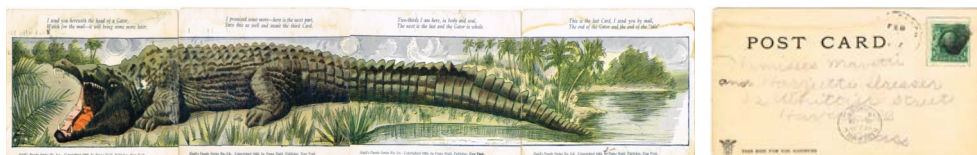
Published a variety of card types but mostly view cards of the Northeast and of Florida. Most of his cards were printed using an open halftone and sometimes hand coloring was added to limited sections of the image. They also produced many novelties, a set on the San Francisco earthquake, and installment card sets for which they are well noted. Huld filed for bankruptcy in 1914 but he probably stopped publishing cards in 1909. (From Metropolitan Post Card Club of New York City website)

Until recently if I saw a set for auction that I already had I felt I did not need two sets the same and did not notice a change in the colour or publisher. Writing this article has led to my belief that the same artwork for some sets were produced by more than one publisher; also that Franz Huld and maybe other publishers produced a second printing of the same picture which differed slightly from the first with regard to colours and also the design of the backs of the cards.

Franz Huld's installment sets are all marked "Huld's Puzzle Series No. * ", and each card shows the letter "a", "b", "c" or "d".



No.1—Alligator—Copyrighted 1905 - Cancelled May 1906. Large letters on reverse.



No.1—Alligator—Copyrighted 1905 - Cancelled February 1907. Smaller letters on reverse.



No.2—Dachshund—Copyrighted 1906 - Cancelled February 1906. Large letters.

A closer look at the Alligator sets shows that the light set appears to be a simple line drawing that is hand coloured, while the darker set comprises the same line drawing with extra printing passes of shading lines and dots in black, green, red, blue and yellow.

The Dachsund set was also published in two colours and I assume the same comments as for the Alligator sets apply to these two sets as well.

CONUNDRUM POSTCARDS - by Demaris Elrod Swint

Conundrum - A Riddle whose answer is or involved a pun.

Conundrum Postcards - These are a form of novelty cards on which a riddle is put forth. The answer lies within the clues on the card and is meant to be humorous.

This is a puzzle series published by Dederick Brothers of Hackensack, New Jersey in 1906 and 1907. These postcards contain a question whose answer can be found in the elongated letters that can be read by holding the card at an oblique angle so the letters are drastically foreshortened. An example of this question is "What is better than a pretty girl?" It can be answered in the distorted lettering by "Two pretty girls"

Looks like gobbledegook to you and want to know how to "find the answer"?

Take a look at illustration #1. Seat yourself in a chair under a bright light. Hold it flat in front of your eyes so you are looking across the page from bottom to top. Raise and lower the far end so you can view the long lines. The question is: "Why is a woman's beauty a fake?" Hint: the first letter is B.



These and other novelty postcards were the delight of the card manufacturers, because the trade papers of the day carried more notices and advertisements for these than for any other type of card. These views are part of a set of 20 conundrum postcards. At the time the purchase price was \$10 per thousand and sold by the Postcard Department of The American News Company of New York City, New York.



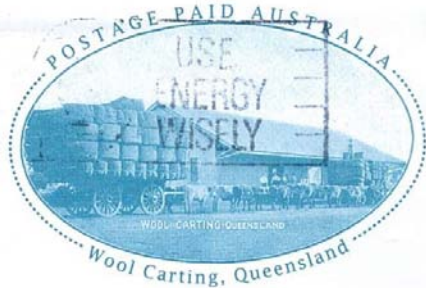
Continued overleaf



I find these cards fascinating and fun. I believe they are over looked because if someone doesn't know how to "find the answer" they are put back in the seller's box. Good for me as I still have nine to find for this set. The price range I have paid is from as little as \$1 and as high as \$25.

The following note was received from our member Graeme Chequer:-

*Received our ever welcome newsletter only to have this cancellation on the prestamped envelope.
Thought this image may bring a few smiles to readers of the next newsletter.
Not sure if it was intended advice to bullocks or bullockers, or ?*



VALE ALLEN DOWNES (10.08.1941 – 28.06.2013)

It is with deep regret that the Executive advise the membership of the passing of Allen Downes, one of our Committee Members and President of the South Australian Philatelic Council with which we are affiliated.

Allen became interested in picture postcards some years ago and chose English Churches as his area of specialisation. There are over 10,000 Churches in the UK (not counting Abbeys and cathedrals which Allen did not collect) and at last count he had over 3,500 different. In addition, Allen collected English Monuments, Piers and other notable buildings.

Allen preferred to collect rather than exhibit competitively although he enjoyed putting on club displays over the years and was more than willing to share his knowledge.

It was only in November last year that Allen entered a 15 sheet one frame picture postcard exhibit in the National Exhibition held in Hobart. Entitled "Hampton Court Palace", his entry received 79 points and a Vermeil medal. On the drawing boards at his sudden passing was an exhibit of English Piers which he had entitled "Piering out to Sea".

Allen was an avid reader and amassed a significant library of books on many topics including picture postcards and a complete collection of Pevsner's books on each County in the UK.

Allen is survived by Alma (his wife of 49 years) who is also a member of this Society, married daughters Alison & Anne and five grandchildren. The Society extends its deepest sympathy to Alma and family at this time. We are pleased to learn that Alma intends to resume attending our meetings in the new year.

