

Upcoming event July–August 2020

Antarctic Festival Stamp, Postcard & Collectibles Exhibition

30 July to 2 August, 2020
Brooke Street Pier, Hobart



Limited Edition PNCs – buy now before sold out.



The Antarctic Philatelic Event Not to Be Missed!

The Australian Antarctic Festival is held biennially in Hobart and attracted 25,000 visitors in 2018. In 2020 a 4-day **Antarctic Festival Stamp, Postcard & Collectibles Exhibition** (including letters over 200 years old) will be held as part of the 6-day festival (29 July to 3 August 2020).

- Exhibitors receive a sterling silver medal (entry forms at <https://apf.org.au/antarctic-festival-exhibition/>)
- Recreated menu from Mawson's farewell dinner at Hadley's Hotel (1 August) - see <https://www.trybooking.com/book/event?cid=496868&>
- **100 Only numbered supporter's packs** containing (above) three PNCs with silver overprint, Antarctic Replica Card overprinted & \$10 drink voucher for Mawson Dinner plus exhibition catalogue. \$100 pack
- **50 only** of each PNC with gold overprint. \$35 each PNC
- **100 only** silver plated bronze copy of exhibition medal. \$30 each

If you intend to exhibit then send in your entries soon as space is limited. The overprinted PNCs are selling fast so send in your orders pronto as they are likely to sell out well before the exhibition opens.

The Antarctic Stamp, Postcard & Collectibles Exhibition is being run by a subcommittee of the Australian Philatelic Federation and is an event of the 2020 Australian Antarctic Festival.

Free Entry

Contact:
Darryl Fuller
Antarctic Stamp Exhibition
PO Box 267
GEORGE TOWN TAS 7253

Email: djbsfuller@inet.net.au

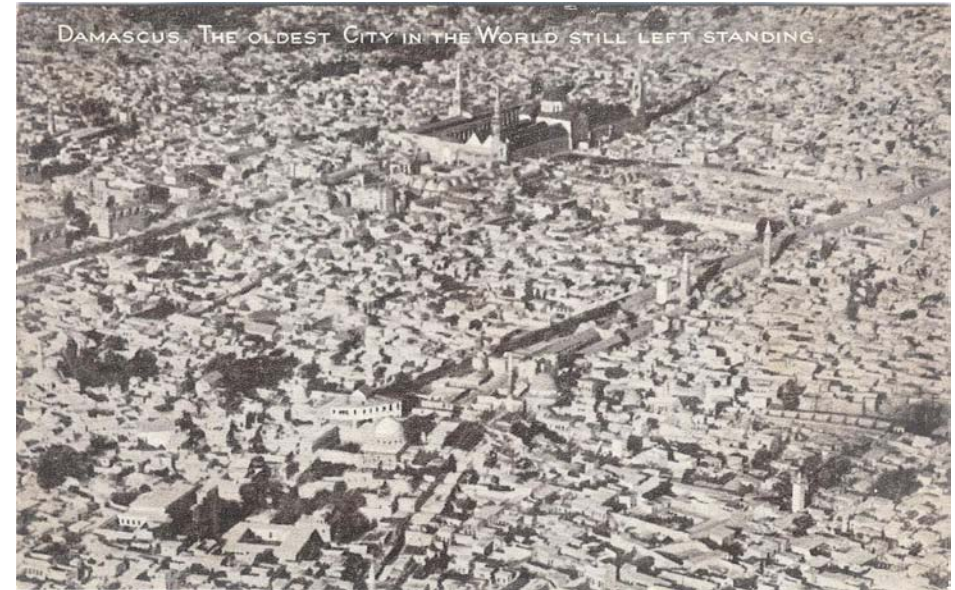
Web:
<https://apf.org.au/antarctic-festival-exhibition/>

Mobile: 0417 672 543

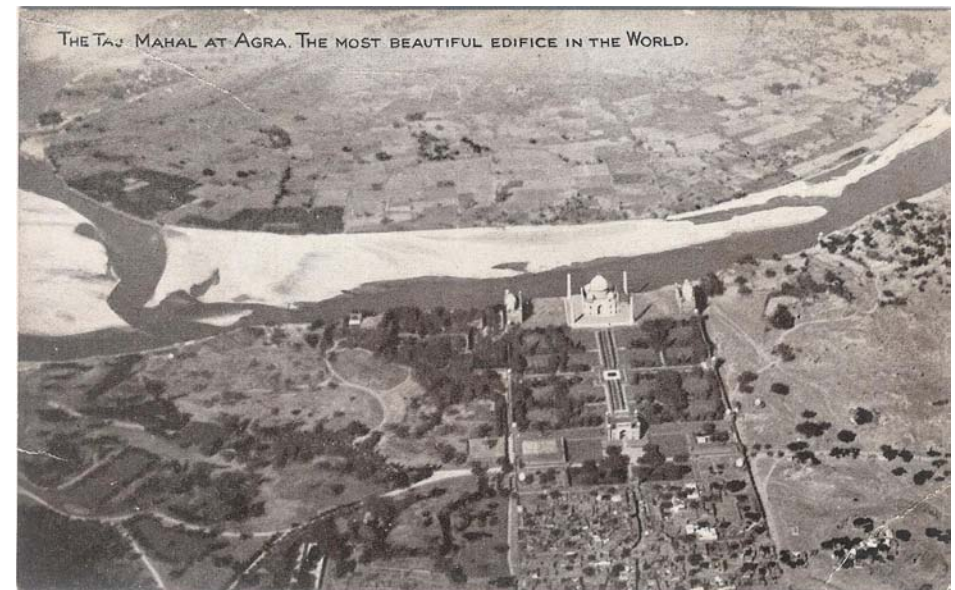
or

Tony Shields
Email: shieldsstamp@email.com

Mobile: 0430 129 472



Damascus, the Oldest City in the World left standing



The Taj Mahal at Agra, the most beautiful edifice in the World

CLUB MEETINGS—October 2019

Thanks to Ron Ritter for putting on another wonderful display of his beloved Port Adelaide and surrounds in photographic postcards. This display covered views of Steamships, Flying Boats, including sea trials and wrecks. Discharge papers of seamen were also included. Adelaide was also included. They were photographed by Adelaide Landscape Photographer, Captain Samuel Sweet circa 1880, and published by Messageries Maritimes, circa 1910. Postcards of two ships abandoned c 1902-3 on the southern shore of Garden Island and two photographs of their condition in 1998. Lastly on a lighter note you find three postcards of the comic nature on Port Adelaide. They were produced in the 1950's and 60's.



"Robinson Bridge, Port Adelaide, c 1884.
Postally used in France on 15 May, 1911



French seamen relaxing on the Semaphore Jetty in 1885. (note the rails at right for the hand truck)

"Government Buildings" c 1880. G.P.O. and Treasury Buildings



"Government Buildings" in Victoria Square, c 1880.
Postally used in France on 18 May.1911



Emu Bay on North Coast 19 km from Kingscote. Proclaimed as Maxwell 28th December 1882. Present name adopted 20th February 1941



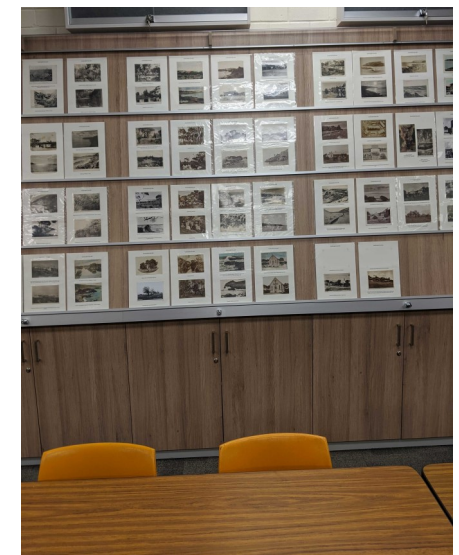
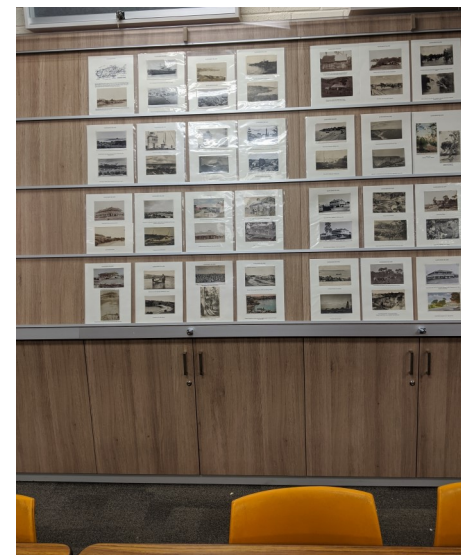
Emu Bay. Publisher, Laura Davidge



Emu Bay Road under water. Published by D. Taylor.



Emu Bay, near Kingscote. Printed by D. Taylor for R. L. Barrett, Kingscote.



CLUB MEETINGS—January

Kangaroo Island Postcards from our President



Many thanks to David for putting on a display of Kangaroo Island Postcards.

Kangaroo Island, has undergone major devastation due to the bushfires. A fitting tribute of memories of an Island that holds a special place in the history of South Australia.

The topics on the postcards included lighthouses, the Queenscliffe Post Office, street scenes, early settler buildings including **FAITH, HOPE** and **CHARITY** cottages, the first settlement in South Australia. Businesses of the day included fur trapping and eucalyptus making. Part of the local events included a wedding party and the visible wreck of the French Baroque Monte Bello.

This is the start of another display that David has plans of developing for competitive exhibiting (5 frames).



Salvaged remains of S.S. 'Grace Darling'.
Remains of S.S. Flinders at left. Photographed 1998



S.S. 'Juno' passing Birkenhead. Pt Adelaide, c 1904

S.S. 'Grace Darling' c 1908
Inset Captain Tainsh

Salvaged remains of bow and forward section of hull
S.S. 'Juno'. Photographed 1998



CLUB MEETINGS—November

Our Xmas Meeting for 2019 was a lighted-hearted night of chat, Displays and refreshments plus raffle prizes. We welcomed Gaye and Graeme Chequer, two of our members from Tasmania.

Displays were by David Figg with his Hoboken Docks Fire 1900 in New Jersey; Arthur Ebenezer Pitt, an orchardist from Adelaide and Brookes Limited, a quarrying business in York, England. David also brought along postcards depicting indigenous birds and small animals of South Africa. They were taken from original artwork.

Neil Bonel put up eleven postcards with Xmas scenes.

Gaye and Graeme had Orchids on Xmas Greeting postcards, based on postcard publishers found within one square mile of London, much of which was devastated by the bombing of WWII

