

## Club meetings—February, Linda Welden

At our February Meeting Linda put up 7 different one frame postcard displays. From our club competitions Alice thru the looking glass, and Auckland, NZ were shown. Carisbrooke Castle, Tower Of London, and The Queens Doll House were British based displays. Sunlight Soap is of modern cards and lastly Pandora's Box, is her family on postcards.



16

The craze for collecting picture postcards in the British Empire appears to have occurred in the wake of the Paris Universal Exhibition of 1889. One of the first picture postcard companies which offered British views was set up by a 17 year old teenager Evelyn Wrench. His idea for the company, Messrs. Wrench and Co., began while on holiday on Germany with his parents in 1900. Here he saw how established the picture postcard trade was and so arranged for a small run of English cards to be printed by a firm in Saxony after he returned to England. These did so well he soon repeated his orders and expanded his business to the point he was employing 100 people and taking orders for over 5000.00 pounds a month. Unfortunately his inexperience as a businessman and the success of the operation meant he was over extended and when he failed to raise capital the business collapsed. The first postcards were introduced to Australia in by the New South Wales Government in December 1875, but while decorated with a bamboo border they could not be referred to as pictorial postcards. These cards appeared first as decorative vignettes in the late 1880s, before the New South Wales Government Printing Office produced a series of pictorial cards in 1898. Most of these were government issue and had pre-printed stamps on the address side and an image on the front. In 1895 the Victorian Government gave permission for the use privately printed postcards under the following conditions, '... they must be made of ordinary cardboard not thicker than the material used for the official postcard, and measure not less than 1 inch x 3 inch nor more than 5 ¼ x 3 ¼ inches, and that there be nothing affixed, written, or otherwise impressed on the front thereof except the address and stamps in payment of postage. On the reverse side any communication may be written or printed but nothing whatever can be attached except adhesive stamps in payment of stamp duty.'

This meant the earlier cards had an undivided back with the message often written next to the image. These kinds of cards, particularly those with real photographs on them are highly sought after by collectors. The picture postcard format we are more familiar with appeared in 1905 when the Australian Postal Service allowed the cards to be divided on the back. This allowed the address and the message to be put on the back and the pictorial image to take up the entire other side. The craze for collecting postcards in Australia really started around this date and remained in vogue until soon after the First World War. From this period until the early 1920 collecting became less popular as postal charges increased and telephones became a more popular means for exchanging information.

Further facts to be continued in the August and November issues.

9

## May Joint Fair 1st & 2nd May

Thanks to David Figg and his radio interview with Peter Goers he was contacted by the Sunday Mail and we ended up having a really good spread to promote the upcoming weekend fair. Well done Mr President.



After over 2 years without a major Stamp Fair, the attendance was excellent, the dealers were extremely happy to be out and about promoting the hobby.

2 auctions were held, with good quality material and a wide range to suit most collectors.

A wide range of displays, philatelic and non philatelic were on show.

Thanks to our caterers, and all the volunteers who participated to make the show the success we all hoped for.

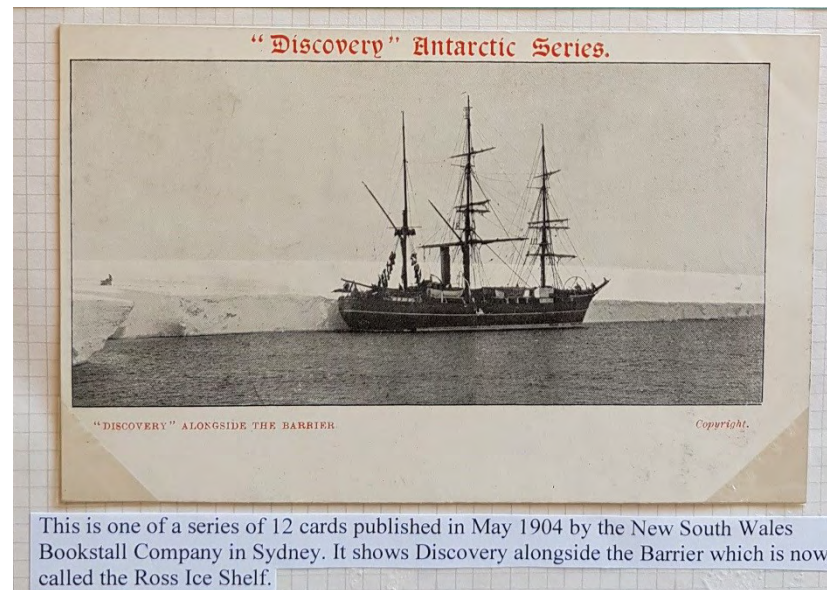
**Ron Ritter** exhibited (1) picture postcards of the suburb of Hindmarsh, S.A. and the nearby district.

**Jenny Roland** exhibited (1) Postcards from Austria of Austrian Correspondence Cards of 1883 (2) P.N.G. aerogrammes to Independence. (3) The House of Vettii – Postcards that take you on a guided tour of the many artistic reassures in Pompeii that were exposed by scientific but slow excavations. (4) Six hours underground at Jenolan showing postcards of photos taken of the Jenolan Caves on the edge of the Blue Mountains, N.S.W. (5) United Nations – First Daly Covers 1951 -57. (6) The 4<sup>th</sup> Dimension – postcards that show time. (7) The Invasion of the Moon 1957 -1969 – stamps and covers showing material related to the exploration of the moon. (8) General Douglas Macarthur – a fascinating look at his life as shown on postage and Cinderella stamps, postcards, first day covers, telegrams, match box covers, war bonds, money, badges, boxes, coins and medals.

**Tony Presgrave** – (1) postcards of “A look at Bridges” in stone, timber, iron or steel, concrete and footbridges

**David Figg** – (1) The Antarctic Treaty- displaying covers, stamps, maxi-cards and postcard from several different countries.

(2) Circular Quay, Hub of Sydney. (3) The Hoboken Dock Fire 1900 – an incredible display of postcards of the event. (4) The Adelaide Hills Railway Viaduct – a display of postcards showing the viaduct. (5) Arthur Ebenezer Pitt an orchardist from the Adelaide Hills, S.A. - a display of postcards from his life's experiences. (6) A Child's Plea “Please, Have you go a cigarette picture?” a very colourful, humorous display of postcards. (7) Friendly Societies in Australia displaying envelopes and postcards.



This is one of a series of 12 cards published in May 1904 by the New South Wales Bookstall Company in Sydney. It shows Discovery alongside the Barrier which is now called the Ross Ice Shelf.

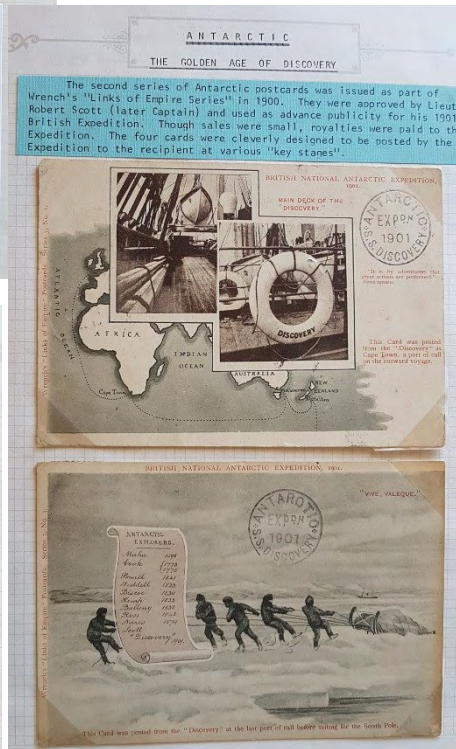
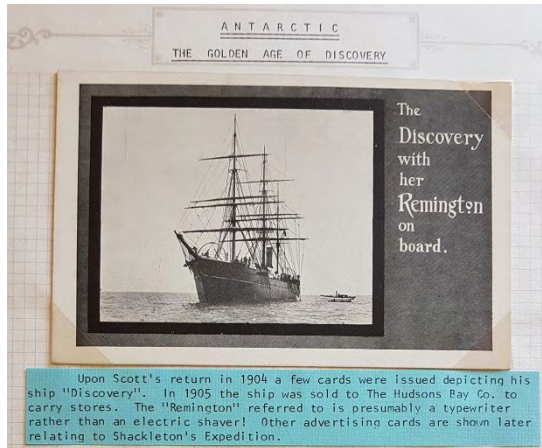


# Members Items—Tony Shields

The RRS Discovery was used by Scott in 1901-4 and Mawson in 1929-31. These photographic cards from an unknown publisher show a long, horizontal view of the Discovery's Wardroom looking left, and a vertical photo showing a stern view of Discovery moored at the Thames Embankment circa 1935. She is now on permanent display at Discovery Point, Dundee, a short distance from where she was launched in 1901. Queen Victoria took a huge personal interest in the ship's construction but died shortly before it was launched to great fanfare.



1901-4 British Antarctic Expedition led by Captain Robert Scott sailed on the Royal Research Ship Discovery. It is thought that these photographic postcards of the "Discovery" were issued in the 1930s after Mawson had finished with the vessel during the 1929-31 BANZARE Expedition. The printer and number of cards in the set is unknown. This scene depicts a front starboard view of Discovery at the Thames Embankment in London where it became a base for Sea Scouts. The ship was built in Dundee especially for Captain Scott's 1901 Expedition, which is why I have displayed it here.



**Alma Downs-** (1) Bognor Regis, postcards of a sea-side town in West Sussex, England. (2) Penzance, postcards from a village in England. (3) Sandringham House and Estate – postcards from Norfolk, England. (4) A short holiday in Clovelly on the coast of North Devon - Postcards showing the town. (5) Holyrood Palace – Postcards showing the outside and inside of the palace, which is located at the bottom of the Royal Mile in Edinburgh.

**Dianne James** – (1) Postcards of steam trains, (2) South Australian Opal Fields (3) Australian orchids.

**John Bodnar** – (1) A beautiful, colourful exhibit of postcards of The Queen of the Fairies and her subjects. (2) The Russian Expeditionary Force and the Russian Legion in France 1916 – 1918. (3) Cats and People too, (4) The 1909 Challenge "Cross the English Channel by aeroplane" with amazing postcards from this event.

**Linda Welden** – (1) Lundy Island – A display of a map, postcard, stamps and covers of Lundy Island. Atlantic Coast Air Services – an exhibit of covers, stamps and postcards of the Atlantic Coast Air Services. The Atlantic Coast and Lundy Air Lines memorabilia and 1954 Silver Jubilee issues from Lundy Island.



# Members Items of interest David Figg



The Bangladesh Matchbox Collectors club held the 1st World Exhibition from the 1st to 15th January.

19 countries attended with 52 entries and 53 clubs

The cards were specially produced for the event

Something different to do in your spare time

N	M	T	O	Y	M	B	C	A	N	T	L	E	N	F	I	S	H	E	R
Z	C	T	U	R	N	E	R	L	N	I	G	R	U	P	S	W	J	V	X
R	G	E	V	W	S	W	K	O	T	S	E	P	M	E	T	P	Z	O	K
I	I	R	P	A	T	J	U	J	W	N	N	O	T	P	U	R	J	U	M
C	L	B	O	I	L	E	A	U	Y	N	G	H	A	R	D	Y	S	A	Q
H	L	X	H	N	O	A	C	A	R	R	E	N	S	I	D	F	U	L	M
A	I	J	B	R	Y	Q	P	S	T	A	H	L	C	L	Y	Z	I	T	B
R	D	R	A	N	N	A	T	S	F	M	U	C	H	A	A	G	T	H	E
D	V	N	R	K	W	Z	E	B	A	T	E	S	M	N	J	V	H	Y	R
S	E	F	H	Y	P	S	J	T	M	D	E	L	U	E	W	U	I	A	T
O	I	U	A	F	S	O	T	Q	X	K	D	E	C	L	O	K	E	S	I
N	C	L	M	C	R	W	D	A	V	E	Y	L	K	S	X	E	L	D	G
J	I	L	G	A	E	E	B	U	X	T	O	N	E	H	E	J	E	N	L
T	V	W	M	L	O	R	W	H	E	E	L	E	R	T	E	W	T	I	I
H	O	O	L	D	U	B	P	E	Y	L	I	K	I	N	S	E	L	L	A
M	D	O	E	E	J	Y	V	K	I	R	C	H	N	E	R	F	G	R	G
A	U	D	Z	C	N	X	H	L	L	A	W	F	K	L	E	I	N	L	N
L	L	I	N	O	S	B	I	G	E	R	O	M	Q	B	U	L	L	K	U
L	X	Q	E	T	I	A	W	H	T	U	O	T	O	U	P	I	Y	Z	O
E	G	H	U	T	C	H	I	N	G	S	D	W	I	G	G	I	N	S	Y

ARTISTS SURNAMES		
ATTWELL	GIBBS	SPURGIN
BARHAM	GIBSON	STAHL
BATES	GILL	STANNARD
BERTIGLIA	HARDY	STUDDY
BOILEAU	HUTCHINGS	TEMPEST
BRETT	KINSELLA	THIELE
BROWNE	KIRCHNER	TURNER
BULL	KLEIN	UPTON
BUXTON	LINDSAY	WAIN
CALDECOTT	LUDOVICI	WALL
CARR	MAUZAN	WHEELER
CANTLE	MAY	WHITE
CLAPSADDLE	MCGILL	WOOD
CLOKE	MUCHA	YOUNG
DAVEY	OUTHWAITE	
DWIGGINS	PAYNE	
ELLAM	RICHARDSON	
FISHER	SCHMUCKER	
FULLWOOD	SOWERBY	

# Members Items of interest Tony Shields

Welcome to Tony Shields, President of the Antarctic Festival Stamp and Postcard Exhibition. The following postcards of Shackleton's expedition will be just a few that will be on display at the Antarctic Festival Stamp and Postcard Exhibition, Hobart, 25 - 29 August 2022

They have just launched a new Facebook page for the Antarctic Festival Stamp and Postcard Exhibition.

<https://www.facebook.com/antarcticstampexhibition>

