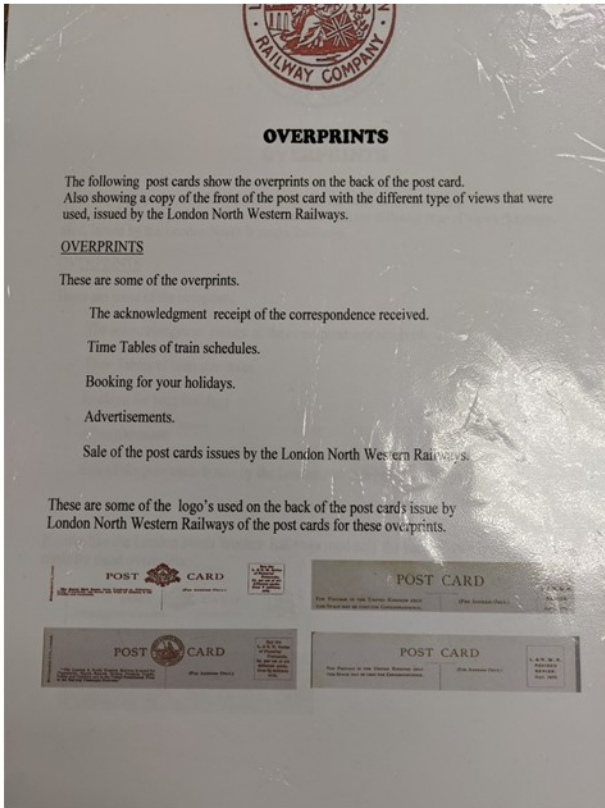




# Display by George Turner

## LWNR RAILWAYS



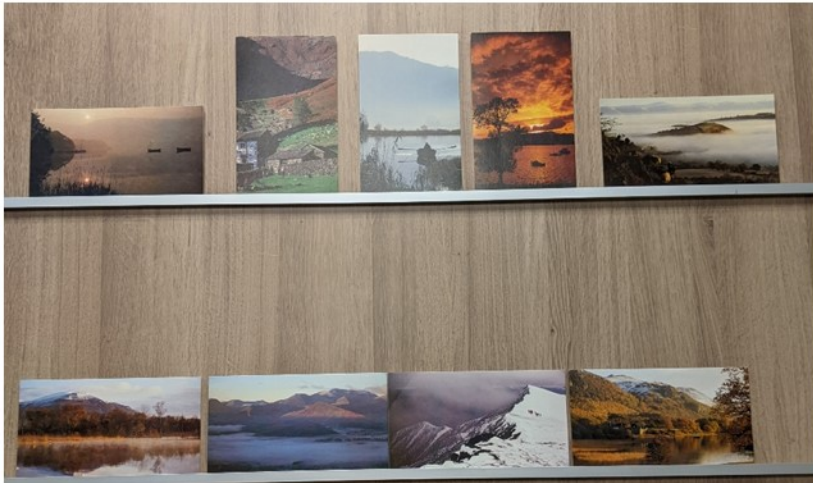
The trade cards depict all the scenes on the post-cards in the main display.



## Members items



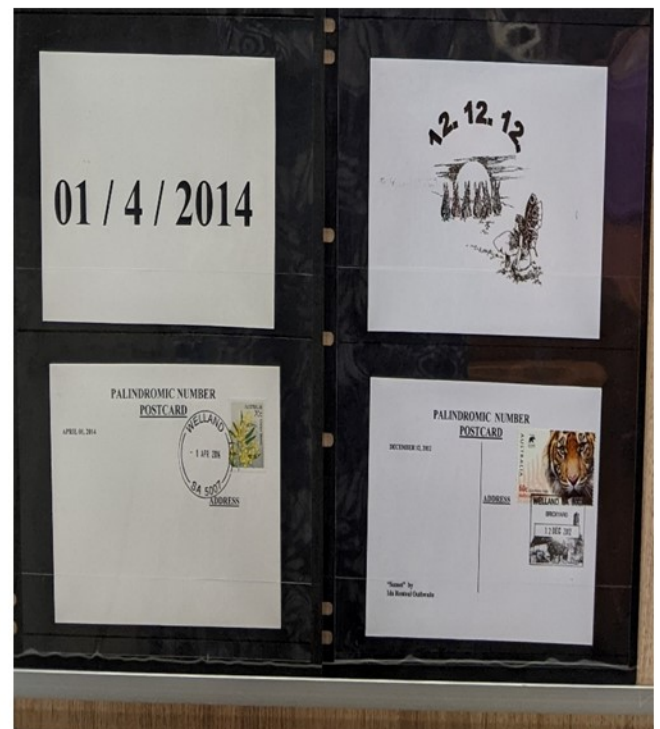
Postcards from David Figg all to do with match sticks, positioned in a mathematical format.



Large postcards of the Lake District

Postcards from John Bodnar

These cards are showing a Palindrome, 22nd of Feb 2022, 1st of April, 2014 and 12th Dec 2012



## TRADING NIGHT



We only had David Figg attending as a dealer, members also had the chance to go through APS postcards that have been donated. Covid played a part in the number of people attending our meeting as well. Hopefully next year we will have more of our members attending.

## POSTCARD OPEN DAY

Due to Covid we ended up only having 2 dealers in attendance. John Cornelius and Ken Ash both having a successful day where they richer but with less philatelic material in the boxes.

Light refreshments were available, and was appreciated by all.



Our next open day is Sunday July 24th. We should have four dealers with a range of philatelic material available.

Opening times will be from 10am to 4pm.

Light refreshments will again be available. Hope to see you there.