

Australian Postcard Society Inc



BULLETIN

Nov 2022 Quarterly Issue No. 53

WEBSITE ADDRESS: australian-postcard-society.com

Meetings: 7.45pm.

4th Thursday of the month except December

(11 meetings a year)

WHERE: Saphil House, 22 Gray Court, Adelaide

WHO: Anybody interested in postcards

A members display each meeting covering a wide range of topics for the postcard enthusiast.

An auction of postcards held each meeting

Bulletin Contents

Pg 2	Club information programme meetings
Pg 3	Members items—Don Costello
Pg 4-5	August Meeting—Delmont Postcards
Pg 6-7	September meeting—Westminster Abbey
Pg 8-9	October Meeting One Frame displays
Pg 10-11	Members Items of Interest
Pg 12-15	Members article—John Bodnar
Pg 16	History of the Postcard
Pg 18	Member Buy & Sell

Syllabus for 2022

Date	Invited Displays-
22nd September	Linda Welden—"Westminster Abbey"
27th October	One Frame displays—all members
24th November	Christmas Supper breakup - Bring a plate of food to share and a xmas postcard display along or items of a xmas nature..

Syllabus for 2023

Date	Invited Displays-
26 January	Broken Hill (Ray Garlick/ Betty van Tenac)
23rd February	One Frame displays—all members



Calendar produced by Delmont's



Margaret Flockton (1861 – 1953) was an Australian botanical artist, particularly noted for her illustrating of "The Forest Flora of New South Wales (some 300 plates), "A Critical Revision of the Genus *Eucalyptus* , and the genus *Opuntia* (prickly pear), all by the botanist and forester, Joseph Maiden. She was the first botanical illustrator at the Royal Botanical Gardens in Sydney.

She started work at the Royal Botanic Gardens on 3 June 1901 at the rate of "2 shillings per hour" and was earning £330 per annum at her retirement in 1927. For 27 years, from age 40 to 67, she turned out botanical drawings of the highest quality. There are some 1000 of her illustrations in The Botanic Gardens Trust Archive (With thanks to Wikipedia).

Margaret Flockton produced only a small number of postcards. The one shown here is from a series of 12 cards of the Art Series, which seems to have been her only postcard publication. David Cook says that they were produced in five different formats, with different border styles. Most of the styles seem to be rare, as I have mainly seen the full bleed version as shown here.

ELECTED COMMITTEE:

President	David Figg
Vice-President	John Bodnar
Treasurer	David Figg
Secretary	Linda Welden
Librarian	Ron Ritter
Publicity	Vacant
Auction Superintendent	George Turner
Magazine Editor	Linda Welden
SAPC Delegate	Vacant
Circuit books	Tony Presgrave
Raffle Organiser	Alma Downes
Patron	Phil Sunman
Web Master	Johanna Stafford
Auditor	Andy Kovaleff

Web site addresses of interest to our members

New Postcard collectors website:
www.postcardhistory.net
 Picture Postcard Monthly:
www.picturepostcardmagazine.co.uk
 The Western Australian Card Collector's Society website: w-a-c-c-s.weebly.com
 The New Zealand Postcard Bulletin:
www.postcard.org.nz

Any questions or matters of interest contact

The Secretary,
 Linda Welden,
 PO Box 281,
 Edwardstown,
 South Australia, 5039.

email:
lindaw3456@gmail.com
 Phone: 0421 367 665

Membership Fees—1st July-30th June

SINGLE	\$20.00	JUNIOR up to 16	\$ 6.00
FAMILY	\$30.00	OVERSEAS AUS	\$35.00

BULLETIN BACK ISSUES

If you have missed out on back issues of the Bulletin they are available at \$5 plus postage. Or I can email you a pdf

BECOME INVOLVED

Bring any interesting items for "Show and Tell".
 Members can bring their items for sale to meetings.
 Bring auction lots to meetings.

ARTICLES FOR THE BULLETIN

Bring in a postcard... or as many as you want.
 If you are from interstate/overseas scan it and email. Or send the postcard registered mail it will be scanned and returned asap registered post. With **each** postcard a write-up will be needed - about half page or more. Either hand written or typed. Add your name if you wish ,or not, if you are worried about the safety of your collection. Keep them coming they will be added as space permits.

From The Editor—

Hi Folks,
 A huge thank you to **our members** for contributing items for The Bulletin. For every a4 page published, you get \$2 off your next years subscription fees.
 For Members who do use Facebook we do have a club page.
 Members of the public are invited to donate any unwanted postcards to our club.
Feedback on the new format will help me improve the layout, any suggestions welcome
Thanks Linda

UPCOMING EVENTS 2022:

If anybody knows of events that may interest members please advise the committee so that it can be included in the Bulletin

13th Nov Community Live auction viewing, Sunday 9.3am, auction starting at 1.00pm

ANPEX

Congratulations to Alma Downes, Jenny Roland, David Figg and Ron Ritter for entering postcards in Apex. Also to club members who put in other classes, John Bodnar, Lorenzo Giardiello, Jenny Roland, Martin Walker, Nigel Carter and Di James. Our members achieved 3 Silver Bronze, 2 Large Silver, 5 Vermeil, (Large Vermeil and 1 Large Gold. Congratulations and a job well done for supporting the exhibition.

Members Item—Don Costello

THE OTHER SIDE OF THE CARD (by "ARKIN")

Most picture-postcard collectors probably select cards for their collections because of what they see on the 'picture' side of the card. A further option is to choose items because of what's on the back of the card. The display shows some of what may be seen there.

The back of the card typically will bear a postage stamp, cancelled by either a mechanical or (in recent years) electronic device, or a by a hand-held date-stamp. Most cards also contain a name and address, and a message intended for the addressee.

Some cards will also carry other markings. Examples include a sender's 'Printed Matter Only' endorsement to attract a postage rate concession; those applied by a censor of military mail and those applied by post office staff to indicate that insufficient postage has been paid on a card. This last marking is known as a 'postage due' marking or a 'taxing stamp'. These markings are not confined to postcards and are also common on letters.

A rubber hand-stamp applied by post office staff is commonly used to show the total 'postage due' or the 'taxed' amount so payable. If the amount payable is not paid by the addressee, the mail will not be passed to him/her and will be returned, undelivered, to the sender.

Cards illustrated include examples of taxing marks, hand-held date-stamps (including pictorial date-stamps) and of some of the various types of messages found on postcards.

Card messages - only some are shown - can include the following categories or examples:

- ◆ formal communications, often pre-printed, such as an advice of a meeting or appointment;
- ◆ interesting addresses, such as those of temporary locations ('Works Office, Bellingen Heads') or of towns the names of which were changed due to wartime sensitivities;
- ◆ quirky messages such as a request from an Aussie in Mexico for a per favour postmark from The Summit Post Office at Mt Kosciusko;
- ◆ messages about the supply (or non-supply) of services, trade supplies or other items, eg, a farmer's request for a rabbit trapper to 'get into' numerous rabbits in his scrub and another writer's "thank you" for hatpins received;
- ◆ World War I soldiers' messages, eg, seeking a penfriend, asking after a missing friend, commenting that Joan of Arc would have been (in 1917) a Red C'ross nurse or a suffragette, or making enquiries about mundane household matters in England;
- ◆ those which have a passing reference of social or wider interest; eg, 'have seen no Eucalyptus trees since leaving California'; 'Milly is "coming out" on Wednesday at a dance';
- ◆ unusual or mysterious comments, eg, 'am not going to life classes this week ... waiting till they get a new model'; 'agree re George but how are we to know how far he will go?';



These categories and examples may overlap and are not exhaustive. Notably, they exclude the most common message types, still seen on today's postcards, and usually related to the sender's journey at home or abroad, eg, 'having a lovely time at (insert place name)'; 'wish you were here'; 'weather is (insert apt adjective)', and so on. Unless one has a compelling interest in such topics, they are rarely of interest to any reader except those who know the sender.

August Meeting — SA Delmont Postcards by P Humby

Our many thanks to Peter Humby for showing us postcards from Delmont Producers.

Joseph Hanka was a pioneer in halftone blockmaking from Melbourne. He employed Steven Robert Delmont on the 12th April as an adult apprentice.

He moved to Adelaide and formed a partnership working from 71 Gilles St, then 11A Flinders St, then 20 Grenfell St, then 131 Melbourne St, finally Wellington St North Adelaide. Hanka retired in 1905 and in 1908 SR Delmont took over the business.

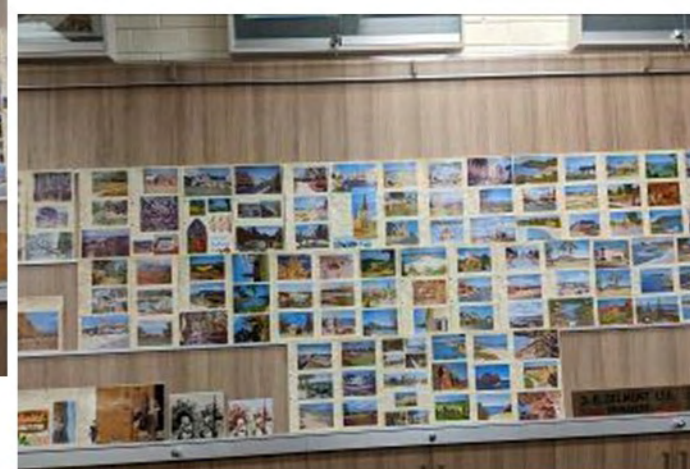
He was a pioneer in deep etch photo litho platemaking in 1932, pioneering also gravure plates in the 60's. During the war years 20 staff assisted with the running of the business, making gun sights, verniers, micrometres and depth gauges. In 1941 his health failed due to the dirty, toxic chemicals that were used.

The first set of postcards were produced on 22nd July, 1963 (3 Aboriginal cards), the 2nd set September 3rd 1963 and the 3rd set on 4th September, as well as comical cards with many more sets being produced later.

Many sons ran the business over the years with Delmont's apprenticeship getting you a job anywhere in the world. S R Delmont founded the Delmont Medal in 1924 and was for the Best Student Overall "Industrious" in "Trade" and was presented annually until 1930

A very comprehensive look at a South Australian card producer.

August Meeting — SA Delmont Postcards by P Humby



Around the early 1960's C S Pitt was one of Delmont's main customers. He began his flourishing business by visiting country towns all over Australia, taking black and white photographs of the many places he visited, usually a set formula, ie town Hall, largest Churches, General Store, roadside café, parks etc. he would then cut and past all of the various scenes into a Postcard format, usually 2 views arranged across the top and bottom and one more in the centre names were added to each view. This final black and white artwork would then be used to produce colour sets of letterpress blocks from which the postcards could be printed for general sale, usually pre-orders throughout Australia.

Initially in black and white, but the inhouse 'Colour Etching Team' began to create a series of so-called "Fake Colour" Cards, this involved using a large Galley Camera to produce four filtered and screened Negatives of the postcard images, they were then exposed onto four metal blocks (one for each colour) in preparation for the etching process.

