

POSTCARD OPEN DAY

Thankyou to everyone who attended our Open day. All of our 4 dealers were very happy with the sales they received. Our thanks go to Abacus auctions for attending and promoting the auction they held the week after.

There were 8 different displays covering postcards, Covers, Stamps and Framas.

The success of Open days rest entirely with the philatelic fraternity that take the time to come and support our dealers.

Hope to see you again next year for another Open Day hosted by the Australian Postcard Society.

Thanks again to every one.

Satisfied buyers and then had lunch and to finish the day off Scones and jam and cream. Thanks Jenny.



Betty Cornish & Empire Trophy Competition



We have Vandon & Pritchard Postcard publishers (above)

And Cecily Elmslie Shand (to the right).

All beautiful cards of an era that is no longer with us.

Sadly this year we only had 2 entries into the Empire trophy and 1 in the Betty Cornish trophy.

The winner of the Empire trophy was Ron Ritter.

Thankyou for entering the competition,



4 pages of British cards, one that you cut out the picture and then sew the picture to material. A birthday card with stones, a silk card from Switzerland, a French priest and the fair damsel and lastly 2 cards with umbrellas, if you hold the cards up into the light you can see what is under the umbrella.



Interesting cards for new collections include Port Pirie south Railway bridges, 4 cards of Angustan (with the wrong spelling) 2 of Gibraltar, 2 on Gorge Road and also Fort Elliot—Fisherman's camp.



My Pilgrimage to Walsingham, Norfolk, U.K.

I came to know of Our Lady of Walsingham from my visits to
St. George's Anglican Church on Goodwood Road,
Goodwood, South Australia.

You could light a candle and say a prayer and ask for Our Lady's intercession on a request that was of concern to you.

Our Lady of Walsingham is a title for Mary, the Mother of Jesus. As a woman and Mother one would presuppose correctly, that she would be the ideal person to ask for help in ameliorating problems one was forced to contend with in their day to day lives.

In the reign of King Edward the Confessor, in 1061, Lady Richeldis de Faverches, the widow of the Lord of the Manor of Walsingham Parva, had a vision of the Virgin Mary and was to experience it twice more.

The Virgin Mary appeared to Richeldis and took her in spirit to Nazareth, to the house where the Angel Gabriel had appeared to Mary. She also saw a spring of water bubbling up through the ground. Richeldis was to take note of the measurements of the Holy House and to build a replica of it in Walsingham.

The workmen experienced difficulties in building the wooden house and Lady Richeldis spent all night in prayer. Divine intervention resulted in the chapel being completed overnight better than any builder could have done. Walsingham quickly became a centre of pilgrimage and was the most popular pilgrimage site in Britain.

Augustinian Canons built a Priory to look after pilgrims and encased the Holy House in a chapel of stone to protect it in the 12th century.

Many kings and queens came to pray at the shrine, the first being King Henry III. Pilgrims often took off their shoes to walk the last mile, from the Slipper Chapel to the Shrine, barefoot as a sign of penitence. Some pilgrims still carry on this tradition today.

In 1538 the Commissioners of King Henry VIII (had visited the Shrine in 1536) on his orders, destroyed the Church buildings and the Shrine and seized everything of value. They burnt the statue of Mary with the infant Jesus on her knee, which was in the Holy House.

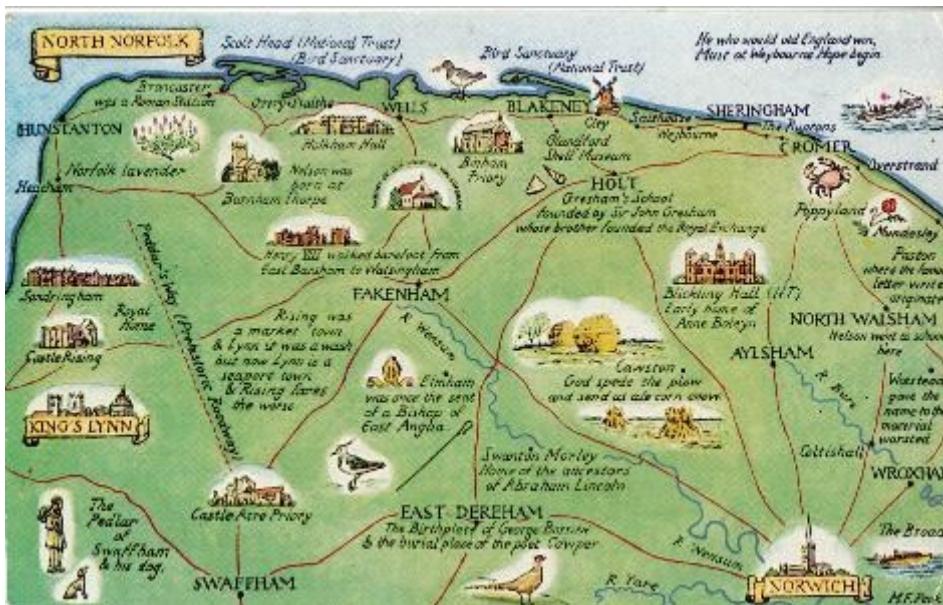
On becoming Vicar of St. Mary's Church in Walsingham in 1921, Father Hope Patten had a statue carved from wood of Mary with Jesus copied from the original Priory seal in the British Museum. This Statue was placed in a side chapel in St. Mary's Church.

Postcard Travels by John Bodnar

Father Patten set about raising money to build a new shrine and in 1931 was able to purchase some land in the village opposite the priory. The church to be built was designed so that it would resemble the original shrine.

On completion the statue was taken from St. Mary's Church and placed above the altar in the new Holy House where pilgrims are invited to light candles and pray. When the foundations were being laid a Saxon well was discovered. The water from the well is believed to heal and pilgrims come to drink the water or take it home for family or friends who are ill.

I made a personal vow to visit Our Lady's Shrine in Norfolk, U.K.



Map Postcard
North Norfolk

Divided Back – Photo Chrome
A Salmon Camera Colour Postcard,
J. Salmon LTD. Sevenoaks
Printed in England
(140 mm x 90 mm)

My opportunity came in 2019 on a visit to the United Kingdom.

On Tuesday May 28th, I began my journey from Kings Cross Station in London on the National Rail Company – Great Northern train that departed at 07.42 hours from Platform 4. It was composed of eight carriages, four of which were disconnected at Cambridge. The train arrived at Kings Lynn, the end of the train line at 09.34 hours.

The bus stop near the entrance of the railway station could be a trap to the unfamiliar traveller as I was to discover myself. On making inquiries with a local resident I was informed that I needed to follow the road on the left of the Railway Station entrance a couple of blocks to the Bus Depot.

There I purchased an all day bus ticket that would take me from Kings Lynn- Fakenham-Walsingham- Fakenham-Kings Lynn (it was the cheapest option).

My initial destination was Fakenham, the bus left from the first rank on the left of the parked buses. It was numbered 49.

I was able to purchase two freshly made warm bacon and egg rolls and a drink for my morning repast at the well appointed Tesco Store next to the Bus Terminal.

These I devoured with gusto enjoying the scenic panorama that unfolded before my eyes as the bus made its way to Fakenham, my first stop.

Postcard Travels by John Bodnar

After an hour journey our bus arrived at Fakenha., Bus 36 was the one I required to get to Walsingham. We came in behind one, I got out and alighted and it left two minutes later. Talk about fortuitous. The journey from Fakenham to Walsingham only took ten minutes.

The Old Pump at Walsingham is where the bus stops. There is no signage to the effect that it is the bus stop.

One must exercise caution when leaving Walsingham due to the fact that you may end up on a bus trip that takes you 2 hours longer to arrive at Kings Lynn and you would most likely miss your train back to London.

The Church built for the Glory of God is only a short walk away from the Old Pump. It is well worth the visit. I lit candles and said prayers for those nearest and dearest to me. I found the experience profoundly moving. Had a good walk around and came across the Drinking Fountain. Drank a cup of the blessed water and regretted not having a suitable container to bring some home to Australia with me.

The Old Pump, Walsingham

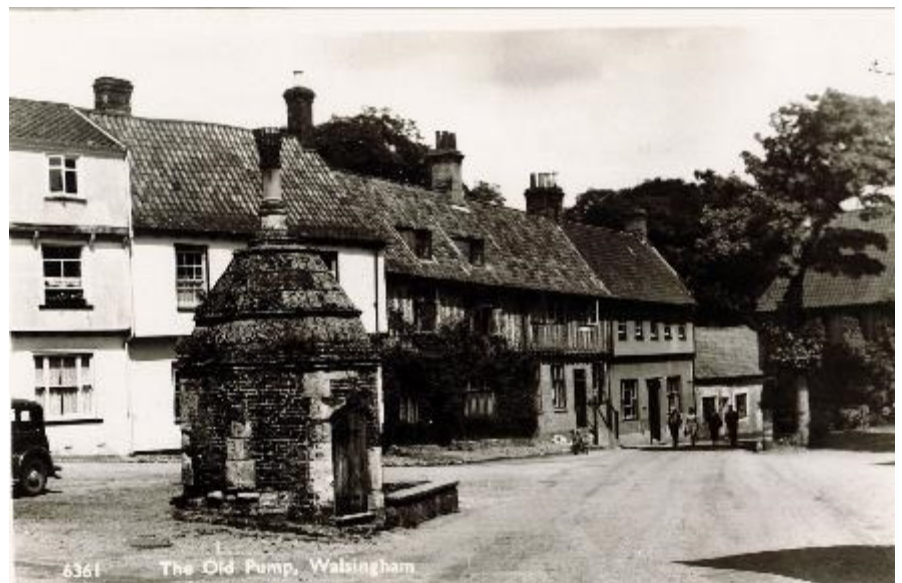
6361

Divided Back – Real Photograph

H. COATES & SONS, WISBECH

Printed in Great Britain

(136 mm x 89 mm)



Walsingham High Street during the Procession at the ANNUAL NATIONAL PILGRIMAGE

R1868

Divided Back – Photo Chrome
Photo Precision Limited. St. Ives,
Huntingdon

Printed in Great Britain

(140 mm x 89 mm)

**SHRINE
OF OUR
LADY OF WALSINGHAM**

Divided Back – Photo Chrome
The Iceni Press, Fakenham, Norfolk
(148 mm x 105 mm)

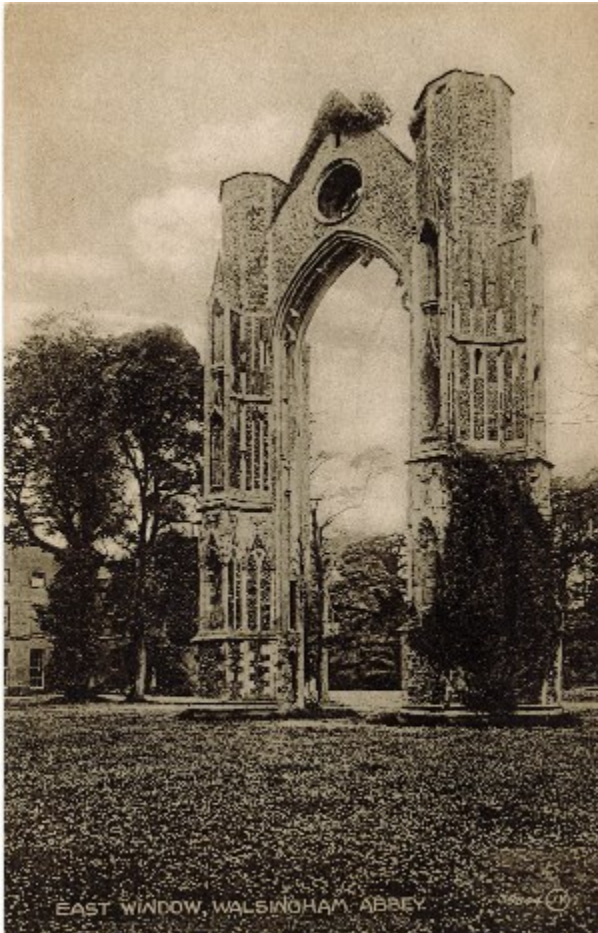


**THE HOLY HOUSE SHRINE
OF OUR
LADY OF WALSINGHAM**

Divided Back – Photo Chrome
The Iceni Press, Fakenham, Norfolk
(105 mm x 148 mm)

**OUR LADY OF
WALSINGHAM
WITH ENGLISH SAINTS**

By Alan Sorrell R226
Divided back – Photo Chrome
Photo Precision Limited
Printed in Great Britain
(139 mm x 88 mm)



**EAST WINDOW,
WALSINGHAM ABBEY**

39844 J.V.

Divided Back – Collotype
Valentine's "BROMOTYPE" Series
Printed in G.T. Britain
(87 mm x 137 mm)

**FRANCISCAN FRIARY
(1347) WALSINGHAM
SN15 P36926**

Divided Back – Colour Photo Litho
Plastichrome by COLOUR PICTURE
PUBLISHERS INC.
Colour by Diz Norton
Made in U.S.A.
(140 mm x 87 mm)

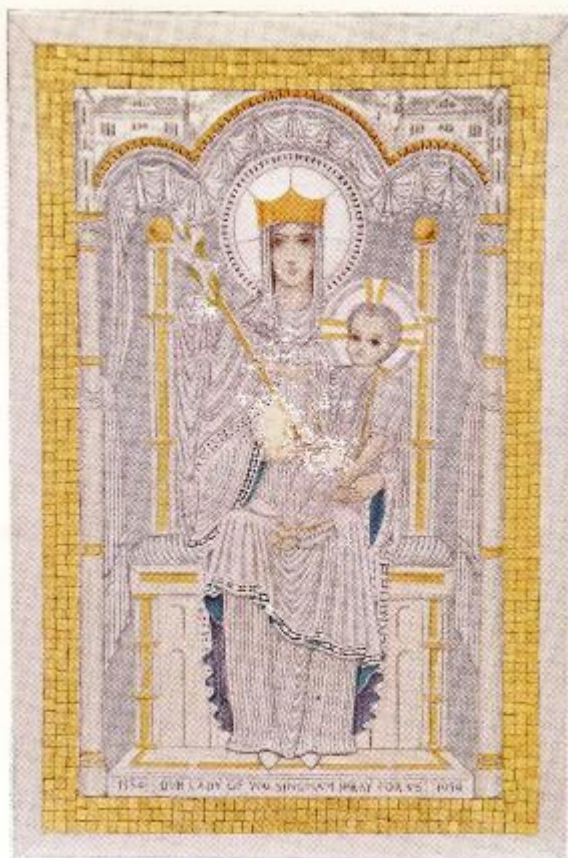


Postcard Travels by John Bodnar



**ORTHODOX CHURCH
OF
ST. SERAPHIM,
WALSINGHAM
R2233**

**Divided back – Photo Chrome
Photo Precision Limited, St. Ives, Huntingdon
(139 mm x 88 mm)**



OUR LADY OF WALSINGHAM

Panel on the Pulpit of Westminster Cathedral

Divided Back – Coloured Photo Litho
Administrator of Westminster Cathedral

Colour photograph by Bill Dee
Printed in England
(89 mm x 140 mm)

MEMBERS ADVERTISEMENTS:
WANTED TO BUY:

Australian Comic Postcards. Collector and researcher looking for singles, groups, duplicates, hoards, large/small collections. Anything considered.

Contact Gary Davies, **PO Box 15, Magnetic Island, Queensland, 4819.** email: gd749@outlook.com changed address

Postcards of Kalamunda (West Australia), Goa (India), Lord Howe Island & Magnetic Bay (Queensland) and Norfolk Islands and Route 66
Email: pk@bankofideas.com.au or Call Peter Kenyon on: 62931848

Australian postcards - from the 60's, 70's and 80's with Australian stamps on them. If you have any and would like to contact Lucy Krause by email: lucy@P2PAgri.com.au



Wanted to buy or exchange
Art Series Postcards

Art Series postcards show "Art Series—Copyright" on the back, lower left:
Art Series—Copyright.

Some show "Australian Series" on the front:
AUSTRALIAN SERIES.

Des Beechey Email: desbee@optushome.com.au

Business Advertising

Per Bulletin prices
(A4 page)

\$60 per full page ,
\$30 half page, \$15.00 1/4 page

**PHILICIA ANTIQUES
& COLLECTABLES PTY. LTD.**

(Proprietors Phil & Chris Sunman)

**317 GOODWOOD ROAD,
KINGS PARK SA 5034**

**SPECIAL DISCOUNTS GIVEN TO
MEMBERS OF THE
AUSTRALIAN POSTCARD SOCIETY**

Buying and Selling **QUALITY** Old Wares
Specialising in Ephemera

300,000 Postcards & 50,000 Cigarette Cards in Stock

Antique photographs, bill heads, tickets, sporting memorabilia, trade cards, military ephemera, magazines, rare books, catalogues, prints.

Also an extensive stock of china, glass, Australian pottery, lamps, jewellery, dolls and toys, furniture, statuary, Australiana, tins, packaging, etc.

Business Hours -

Monday, Tuesday, Wednesday, Friday & Saturday 10.00am to 5.00pm

Contact Details -

Telephone/Fax (08) 8357.8177 or (08) 8357.8077

After Hours (08) 8269.1835 Mobile 0409.695.234

E-mail: philicia@tpg.com.au